



*The
Samuelson
Group of Companies
1984
UK Catalogue*

*The
Samuelson
Group of Companies
1984
UK Catalogue*

INTRODUCTION

This catalogue contains details of equipment and services available from Samuelson Film Service Ltd. and its U.K. subsidiaries and associates. It has been completely revised and reset in order to simplify selection and ordering of equipment.

Because of the enormous range of equipment available, description of particular items and their accessories are necessarily brief, although in nearly every instance outfits are very fully equipped so that the number of 'extras' that need to be ordered is minimal.

While every effort has been made to ensure the complete accuracy of this catalogue, neither Samuelson Group PLC, nor its subsidiaries or associates can be held responsible for the consequences of any errors or omissions. The right is reserved to alter specifications and/or rental prices for any particular item of equipment or service at any time without prior notice.

The attention of customers is drawn to the fact that the Company supplies equipment, materials and services only in accordance with its Conditions of Business. Copies of these Conditions of Business, which include clauses **WHICH EXCLUDE LIMIT OR MODIFY THE LIABILITY OF THE COMPANY AND PROVIDE FOR AN INDEMNITY FROM THE CUSTOMER IN CERTAIN CIRCUMSTANCES**, are available on request.

SAMUELSON GROUP PLC
303/315 Cricklewood Broadway,
London NW2 6PQ
Telephone: 01-452 8090, Telex: 21430
TeleFax 01-450 3881, Cables: Samcine London

© Samuelson Group PLC 1983
ISBN No. 950751308
Fifth Edition

1st Edition 1980
2nd Edition 1981
3rd Edition 1982
4th Edition 1983
5th Edition 1984

**SAMUELSON GROUP
and
HOME TELEPHONE NUMBERS
OF KEY PERSONNEL**

Samuelson's office in Cricklewood Broadway, London NW2 6PQ Phone 01-452 8090 is manned 24 hours a day and 7 days a week. There is always someone there who can be helpful in connection with the services of any of the Group of Companies. However, outside of normal working hours it may be more practical for clients to contact responsible, specialist personnel directly and consistent with the policy of the Group, its Subsidiaries and its Associated Companies of always being 'on-duty' home telephone numbers of more than 80 of our staff, in Britain and abroad, are listed on the following three pages.

SAMUELSON GROUP PLC

303-315 Cricklewood Broadway, London NW2 6PQ
Tel: 01-452 8090, Telex: 21430
TeleFax: 01-450 3881, Cable: Samcine London,

HOME TELEPHONE NUMBERS

DIRECTORS

Sydney Samuelson, Chairman and Chief Executive	455 6696
Michael Samuelson, Managing Director	422 4492
David Samuelson, Technical Director	262 4120
Anthony Samuelson, Financial Director	445 1330
Michael Gratton	(Radlett) (77) 94260

ADMINISTRATION

Dick Greaves (General Manager)	(Radlett) (77) 94579
Jonathan Samuelson (Group Financial Controller)	207 1877

SAMUELSON GROUP U.K. COMPANIES

SAMUELSON FILM SERVICE LONDON LTD.
303-315 Cricklewood Broadway, London NW2 6PQ
Tel: 01-452 8090, Telex: 21430
TeleFax: 01-450 3881, Cable: Samcine London

DIRECTORS

Michael Samuelson, (Managing)	422 4492
Barry Measure (Assistant Managing)	952 2989
Guy Green (Equipment Rental)	892 7787
Karl Kelly (Camera Engineering)	876 1290
Derek Lee (Production Engineering)	907 5845
John Rendall (Client Liaison)	977 6872
Bill Woodhouse (Optical Engineering)	(Ongar) 027 736 2140

CLIENT CONTACTS

Simon Broad	950 0263
Martin Cayzer	450 7753
Steve Evans	(Chelmsford) 0245 71176
John Larkin	775 0704
Dennis McCue	452 9069
Bill Ross	749 2032
Kevin Selway	459 3312
Richard Wareham	207 0615
Mark Warner	049 45 77184 or 040 881 2101

KEY PERSONNEL

Steve Campbell (Samcinevision)	450 6264
Martin Deane (Grips)	366 6944
Gerry Down (Equipment control)	450 5909
Frank Hyde (Batteries)	878 2132
Spike Jackson (Electronics)	953 2575
Malcolm Joynson (Grips)	—
Brian Mason (Cameras)	—
Phillip Mather (Transport)	906 0113
Eddie Price (Cameras)	902 3166
David Priest (Sound)	205 9529
Sid Twyman (Optics)	907 8915

POST PRODUCTION & SOUND TRANSFER

Andrew Hellens	092 73 78232
----------------	--------------

SAMUELSON GROUP UK COMPANIES cont.

and home telephone numbers of key personnel

ENTERPRISE PICTURES LTD.
27 Soho Sq. London W1
Phone: 734 3372, Telex: 298713

John Hogarth, (Managing Director), Anne Boyle

THE PRODUCTION VILLAGE LTD.
100 Cricklewood Lane, London NW2 2DS
Phone: 450 8969, Telex: 21430, TeleFax 450 3881

Anthony Samuelson and Bill Marshall (Joint Managing Directors)

SAMCINE CASES LTD.
100 Cricklewood Lane, London, NW2 2DS
Phone: 450 8969 or 450 2141, Telex: 21430
TeleFax 450 3881, Cables: Samcine London

Charles Smith (Managing Director) (Bracknell)0344 22600

SAMCINE SALES LTD.
303-315 Cricklewood Broadway, London NW2 6PQ
Phone: 450 4557 or 452 8090, Telex: 21430, TeleFax: 450 3881

John Vickers (Managing Director) 868 4974
David Moore 440 2250
Duncan Smith 863 7603

SAMFREIGHT LTD.
Building 521, Room 41/43G, Cargo Agents Building, Stanstead Road,
London Heathrow Airport, South, Hounslow, Middlesex
Phone: 759 6011, Telex: 22197, TeleFax: 450 3881

Mick Jones (Exports) 98 20447
Andrew Holland (Cricklewood) 961 3207
Shirley Lavis (Cricklewood) 897 6271

SAMUELSON LIGHTING LTD.
Samcine West, Dudden Hill Lane, London NW10 2DS
Phone: 452 5477, Telex: 21430, TeleFax: 450 3881

Graham Anderson (Joint Managing Dir.) (Chorleywood)09278 2008
Barry Miller (Joint Managing Director) 505 5042
John Wilson (Client Contact) 863 3299

SAMUELSON COMMUNICATIONS LTD.
303-315 Cricklewood Broadway, London NW2 6PQ
Phone: 452 8090, Telex: 21430, TeleFax: 450 3881

Michael Gratton (Managing Director) (Radlett) 779 4260
Charlie Beddow (Director) (Dunstable) 0582 863518
Garry Davis (Director) (St. Albans) 56 35317
Andy Edwards 790 8061
John Harding (Dunstable) 0582 841972
Brian King 204 1447
John Marriott 361 2689
Karl Roberts 464 6328

SAMUELSON COMMUNICATIONS LTD. WEST ONE
8-12 Broadwick Street W.1.
Cine Hire 734 8981
Video & AV Hire 437 6686

Peter Bennett 441 0327
Mark Bloomfield 659 6545

SAMUELSONS OVERSEAS COMPANIES

and home telephone numbers of key personnel

AUSTRALIA

SAMUELSON FILM SERVICE (AUSTRALIA) PTY LTD.

Sydney:

1 Giffnock Avenue, North Ryde, NSW 2113, Australia
Phone: (2)888 2766, Telex: 25188, TeleFax: 5691

Paul Harris (Managing Director) 428 5573 or 888 2766
Irene Gibbs (Comany Secretary) 639 2246
Peter Backhouse (Chief Client Contact) 94 4296
Peter Voeten (Client Contact) 929 9373
Peter Cameron (Client Contact) 406 4859
Fred Hepworth (Admin/Sales) 44 7672
Rob Hunter (Chief Mechanic) 982 6751
Ken Arlidge (Equip. Preparation - Front Projection Tech.) 440 8435
Brad Maurer (Projectionist) 86 1264
Hugo Rudaz (Chief of Sound) 452 5180
Simon Purton (Head of Lighting) 82 3386
John Bryden-Brown (Maintenance) 427 4237

Melbourne:

25 Lothian Street, N. Melbourne, Victoria 3051, Australia
Phone: (3)329 5155, Telex: 35861

Peter Hobson (General Manager) 870 3848
Ross Williams (Maintenance) 878 2257
Lee Parker (Equipment Preparation) 266 8528

FRANCE

SAMUELSON ALGA CINEMA S.A.

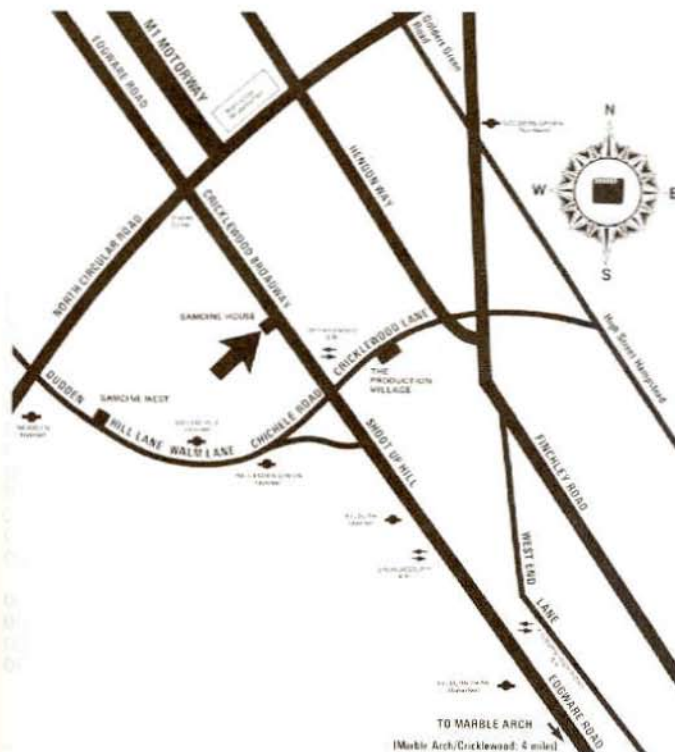
24-26 Rue Jean Moulin, 94300 Vincennes, Paris, France
Phone: 328 58 30, Telex 670 260, TeleFax: (01) 328 5077

Guy Tournier (President, Director General) 996 2873
Christiane Lalier (Assistant Manager) 574 0371
Gerard Morfouace (Client Liaison) 332 6222
Alain Masseron (Louma Crane) (06) 010 1981
Herve Theys (Electronic) 797 4765



SAMUELSON FILM SERVICE LONDON LTD.

Samcine House
303-315 Cricklewood Broadway
London NW2 6PQ
Tel: 01-452 8090, Telex: 21430
Cables: Samcine London
TeleFax 450 3881



EQUIPMENT INSURANCE

For those customers who elect not to make their own insurance arrangement Samuelson Group PLC or any Samuelson subsidiary company can, upon request, arrange insurance cover at the rate of 10% of the rental charge on all UK locations. When equipment is being taken overseas (Eastern Europe excepted), the rate will be calculated at £4 per week, per £1,000 value of the equipment. In each case there will be an excess of £250 payable by the client on any one claim.

The rates are for normal use of equipment only. Hazardous filming assignments require additional cover and it is essential that clients inform us in advance of same so that a special quotation can be obtained from the insurers to cover abnormal risks.

The use of our insurance service is optional and chargeable to clients as stated. We prefer clients to make their own arrangements but it is necessary that we have confirmation in writing that the cover is adequate and is in accordance with our Conditions of Business, a copy of which will be supplied on request.

The attention of Clients is drawn to the fact that members of Samuelson Group PLC supply equipment, materials and services only in accordance with their respective Conditions of Business. Copies of these Conditions of Business, which include clauses which **exclude limit or modify the liability of the Samuelson Group company in question and provide for an indemnity from the Customer in certain circumstances** are available on request.

PANAVISION®

PANAFLEX and PANASTAR CAMERAS

S.F.S. Price Code		Per Day	Per Week
Z96	PANAVISION GOLDEN PANAFLEX CAMERA complete with integral electronic crystal motor, Panaglow, levelling eyepiece, follow focus control, 2 x 500 ft. magazines, 2 x matte box/lens hoods (4x5.650 in. filter size) 24V battery complement and standard accessories	\$400.00	\$1200.00
P81	PANAVISION REGULAR PANAFLEX CAMERA with features and accessories similar to above	\$300.00	\$900.00
Z54	PANAVISION PANAFLEX 'X' CAMERA , complete with integral electronic crystal motor, follow focus control and standard matte box/lens hood (less magazines, extra matte boxes & battery complement	\$240.00	\$720.00
Z67	PANAVISION PANASTAR HIGH SPEED CAMERA (crystal control of all speeds 6-120 fps inc. 24/25 fps) 2 x 500 ft. high speed magazines, follow focus control, matte box/lens hood (4 x 5.650 in. filter size) 24 V battery complement and standard accessories	\$258.00	\$774.00
P40	Automobile Base	\$37.00	\$111.00
P15	Barnies , form fitting Panacover	\$20.00	\$60.00
P14	— as above but handholdable	\$20.00	\$60.00
Z23	— heater 250, 500 or 1000 ft.	\$9.00	\$27.00
Z91, 93	— lens weather protector — short or long	\$9.00	\$27.00
Z16	— Zoom lens heater cover	\$7.00	\$21.00
P83	Batteries , 2 x 24 V and charger	\$51.00	\$153.00
Z06	— additional 24 V	\$17.00	\$51.00
Z17	— 24 V charger	\$17.00	\$51.00
Z05	— belt, 24 V 4 Ah	\$17.00	\$51.00
P11	— eliminator	\$23.00	\$69.00
Z80	Camera-Projector Synchroniser	\$35.00	\$105.00
Z92	Camera-Video Synchroniser	\$39.00	\$117.00
	Filters , see pages 40-44		
P84	Follow Focus Control , regular type	\$12.00	\$36.00
P75	— Super type	\$14.00	\$42.00
P89	— Super (Panastar only)	\$21.00	\$63.00
Z03	— Studio base type	\$81.00	\$243.00

PANAVISION®

PANAFLEX and PANASTAR CAMERAS

S.F.S. Price Code		Per Day	Per Week
	Front Projection , see page 47		
P78	Handgrip Extension , adjustable, left	\$10.00	\$30.00
P80	— adjustable, right, with switching	\$10.00	\$30.00
Z85	Louma Crane Accessories , TV viewfinder	\$132.00	\$396.00
Z86	— TV camera for lens viewing	\$132.00	\$396.00
Z87	— Dual CCU video control unit	\$54.00	\$162.00
Z88	— Remote focus and T stop control	\$72.00	\$216.00
Z25	— Remote footage counter	\$20.00	\$60.00
P86	Magazines , 250 ft. each	\$15.00	\$45.00
Z01	— 500 ft. each	\$21.00	\$63.00
Z02	— 1000 ft. each	\$27.00	\$81.00
Z69	— Panastar High speed, 500 ft. each	\$30.00	\$90.00
Z70	— 1000 ft. each	\$34.00	\$102.00
P39	— Panastar 1000 ft., reversible each	\$45.00	\$135.00
P82	Matte Box , 4 x 5.650 in. filter size	\$13.00	\$39.00
P56	— clamp-on type	\$10.00	\$30.00
P30	Panfader , variable speed control (Panastar only), complete with matte box	\$90.00	\$270.00
Z68	Panfader (viewfinder using taking lenses)	\$20.00	\$60.00
Z42	Panahead , Geared/gyro/friction/free head	\$81.00	\$243.00
P92	— S. type, as above but heavy duty type	\$92.00	\$276.00
M73	— Assistants gadget box	£2.00	£6.00
Z41	Panalite , Camera mounted variable intensity lamp. (Bulbs not included)	\$69.00	\$207.00
Z43, 44	Panapod tripod , tall or short	\$21.00	\$63.00
Z79	Panatape (Electronic range finder)	\$50.00	\$150.00
Z81, 82	Panavid , TV viewfinder for Pfx 'G' or 'X'	\$132.00	\$396.00
Z83	— control unit and monitor	\$54.00	\$162.00
Z84	— Miniature control unit	\$25.00	\$75.00
Z36	Remote Switch , Control cable	\$7.00	\$21.00
Z63	Remote focus and aperture control unit	\$72.00	\$216.00
P93	Remote shutter control cable	\$2.00	\$6.00
P37	Utility base	\$6.00	\$18.00
P41	Variable speed control (Panastar only)	\$11.00	\$33.00

PANAVISION®

PSR SILENT REFLEX CAMERAS

S.F.S. Price Code		Per Day	Per Week
P71	PANAVISION SUPER PSR CAMERA (Spherical) with 4 x 1000 ft. magazines, integral electronic crystal motor, 24 V battery complement, standard matte box/lens hood (4 x 5.650 in. filter size), 3 x regular Panavision spherical lenses (from range 24 mm T2.8, 28 mm T2.8, 32 mm T2.8, 40 mm T2.3, 50 mm T2, 75 mm T2), integral video assist viewfinder (video control unit and monitor not included)	\$246.00	\$738.00
Z97	PANAVISION PSR SILENT REFLEX CAMERA , complete with 3x spherical lenses, 4x 1000ft. magazines, standard matte box/lens hood (4 x 5.650 in. filter size) Panaspeed crystal motor, 36 V battery complement and standard accessories	\$155.00	\$465.00
P66	As above for anamorphic use but less lenses	\$155.00	\$465.00
P25	Batteries , 2 x 36 V and charger	\$71.00	\$213.00
P70	- 36 V (type 36 - NC15)	\$23.00	\$69.00
P95	- 36 V charger	\$25.00	\$75.00
	Filters , see pages 40-44		
P26	Follow Focus Control , Selsyn remote system	\$30.00	\$90.00
P82	Matte Box , wide angle, 4x5.650in. filter size	\$13.00	\$39.00
P23	Motor , Panaspeed electronic crystal	\$40.00	\$120.00
P92	Panahead , Super type	\$92.00	\$276.00
M73	- Assistant's gadget box for above	£2.00	£6.00
Z83	Panavid video camera and control unit with integral video monitor for SUPER PSR camera	\$54.00	\$162.00
J02	TV Viewfinder , Samcinevision with Philips LDH 26 TV camera for regular PSR	£80.00	£240.00
J04	- Samcinevision with Aaton TV camera	£120.00	£360.00

PANAVISION®

PAN - ARRI CAMERAS

S.F.S. Price Code		Per Day	Per Week
Z98	PANAVISION PAN-ARRI III CAMERA , spherical, (12 V d.c., 24/25 fps crystal control, 6-50 fps variable speeds) 3x 400 ft. magazines etc. (excluding matte box, follow focus control and battery complement)	\$184.00	\$552.00
Z99	PANAVISION PAN-ARRI III CAMERA , anamorphic, as above but complete with full aperture gate and anamorphic viewing	\$184.00	\$552.00
	Note: See regular Arriflex III section, pages 20-21 for accessories, batteries, helicopter mounts, rain deflectors, etc.		
P72	PANAVISION PAN-ARRI IIC HARD-FRONT CAMERA , spherical, complete with matte box/lens hood, (4 x 5.650 in. filter size), 3 x 400 ft. magazines and follow focus control (excluding motor and battery complement)	\$57.00	\$171.00
P27	PANAVISION PAN-ARRI IIC HARD-FRONT CAMERA , anamorphic, as above but complete with anamorphic door	\$76.00	\$228.00
Z04	PANAVISION PAN-ARRI IIC HARD-FRONT CAMERA , spherical, HIGH SPEED VERSION (otherwise as P72 above)	\$57.00	\$171.00
Z07	PANAVISION PAN-ARRI IIC HARD-FRONT CAMERA , anamorphic, HIGH SPEED VERSION (otherwise as P27 above)	\$76.00	\$228.00
	Note: For Pan-Arri accessories and additional items see also regular Arriflex section.		
Z18	Barnies , lens, heated for zooms	\$7.00	\$21.00
Z19	- short weather cover	\$9.00	\$27.00
A47	Batteries , Belt, 16 V 4 Ah, with charger	£9.00	£27.00
G18	- Nicad, 2 x 16 V, 7 Ah and charger	£16.00	£48.00
G06	- Nicad, 32 V for high speed operation	£32.00	£96.00
G39	- 12 V 7 Ah comp. (for Arri III)	£16.00	£48.00
P28	Magazines , 2 x 400 ft. throated magazines and shoulder support	\$25.00	\$75.00
P82	Matte Box , wide angle 4 x 5.650 in. filter size	\$13.00	\$39.00
P29	Motors , Crystal control, 24/25 fps	\$42.00	\$126.00
Q20	- High speed and speed controller	£12.00	£36.00
A33	- Constant speed, 24/25 fps., 16 V	£5.00	£15.00
A35	- Variable speed, 16 V	£5.00	£15.00
Z66	- Variable speed, 24 V	\$17.00	\$51.00
P31	Motor Adaptor , Side mount	\$17.00	\$51.00
Q66	Pan-Arri to Panahead adaptor bracket	£5.00	£15.00
	Note: See regular Arriflex IIC section, pages 22-23 for additional accessories, helicopter mounts, rain deflectors, etc.		

PANAVISION®

S/35 MKII CAMERAS

S.F.S. Price Code		Per Day	Per Week
Z20	PANAVISION S/35 MK II HARD-FRONT CAMERA (Spherical) complete with follow focus control, 3 x 1000 ft. magazines, matte box/lens hood, (4 x 5.650 in. filter size) 24 V d.c. variable speed motor etc. (excluding battery complement)	\$145.00	\$435.00
Z64	PANAVISION S/35 MK II HARD-FRONT CAMERA (Anamorphic) complete with follow focus control, 3 x 1000 ft. magazines, matte box/lens hood, (4 x 5.650 in. filter size) 24 V d.c. variable speed motor etc. (excluding battery complement)	\$145.00	\$435.00
G40	Batteries , 2 x 24 V, 7 Ah and charger	£23.00	£69.00
P82	Matte Box , wide angle, 4 x 5.650 in. filter size	\$13.00	\$39.00
P24	Motor , Adaptor to fit PANASPEED motor to S/35	\$10.00	\$30.00
A78	Viewfinder , orientatable	£24.00	£72.00
Note: See also regular Mitchell S35 Mk II section, page 28			

CLOCKWORK CAMERA

Q32	NEWMAN SINCLAIR MODEL N. Clockwork driven reflex camera with Panavision lens mounting. Complete with 4 x 200 ft. magazines, changing bag, etc.	£60.00	£120.00
-----	--	--------	---------

PANAVISION®

PANAGLIDE FLOATING CAMERA SYSTEMS

S.F.S. Price Code		Per Day	Per Week
Z39	SUPER PANAFLEX PANAGLIDE (INVERTABLE) complete with remote focus and T stop control and 24V battery belt, 2 x 500ft. lightweight magazines, 3 x batteries and charger	\$695.00	\$2085.00
Z50	— additional lightweight 500ft. mag.	\$20.00	\$60.00
Z40	SUPER PAN-ARRI PANAGLIDE (INVERTABLE) complete with remote focus and T stop control and 24V battery belt, 3 x 500ft. lightweight magazines, 3 x batteries and charger	\$420.00	\$1260.00
P98	— additional lightweight 500ft. mag.	\$20.00	\$60.00
Z58	PANAGLIDE FOR AATON or ARRIFLEX 16SR16MM CAMERAS complete with TV viewfinder monitor, 3 x batteries and charger (excluding film camera)	\$300.00	\$900.00
Z94	PANAGLIDE FOR VIDEO CAMERAS (excluding camera, monitor, batteries)	\$250.00	\$750.00
PANAGLIDE ACCESSORIES			
Z48	Panaglide arm to automobile adaptor	\$14.00	\$42.00
Z52	Panaglide to free head adaptor	\$9.00	\$27.00
Z46	Panaglide to Panahead adaptor	\$9.00	\$27.00

PANAVISION®

ANAMORPHIC LENSES and LENS ACCESSORIES

S.F.S. Price Code			Per Day	Per Week
WIDE APERTURE				
Z13	24 mm	T1.4 ULTRA SPEED	\$108.00	\$324.00
Z71	28 mm	T2.3 ULTRA SPEED	\$101.00	\$303.00
Z72	35 mm	T1.4 ULTRA SPEED	\$101.00	\$303.00
Z73	40 mm	T1.4 ULTRA SPEED	\$101.00	\$303.00
Z74	50 mm	T1.1 ULTRA SPEED	\$101.00	\$303.00
Z75	75 mm	T1.6 ULTRA SPEED	\$101.00	\$303.00
Z76	100 mm	T1.6 ULTRA SPEED	\$101.00	\$303.00
P73	35 mm	T1.4 SUPER SPEED	\$82.00	\$246.00
Z53	50 mm	T1.1 SUPER SPEED	\$88.00	\$264.00
P77	50 mm	T1.4 SUPER SPEED	\$82.00	\$246.00
P13	55 mm	T1.4 SUPER SPEED	\$82.00	\$246.00
Z11	75 mm	T1.8 SUPER SPEED	\$101.00	\$303.00
P74	100 mm	T1.8 SUPER SPEED	\$101.00	\$303.00
AUTO PANATAR				
Z95	25 mm	T2.5 AUTO PANATAR*	\$74.00	\$222.00
P01	30 mm	T3 AUTO PANATAR	\$76.00	\$228.00
P02	35 mm	T2.5 AUTO PANATAR	\$74.00	\$222.00
P03	40 mm	T2.8 AUTO PANATAR	\$74.00	\$222.00
P04	50 mm	T2.3 AUTO PANATAR	\$74.00	\$222.00
P05	75 mm	T2.3 AUTO PANATAR	\$74.00	\$222.00
P06	100 mm	T2.8 AUTO PANATAR	\$74.00	\$222.00
P07	150 mm	T3.5 AUTO PANATAR	\$74.00	\$222.00
P08	180 mm	T3 AUTO PANATAR	\$92.00	\$276.00
Z21	360 mm	T4 AUTO PANATAR	\$105.00	\$315.00
P09	800 mm	T5.6 AUTO PANATAR	\$111.00	\$333.00
P10	1000 mm	T5.6 AUTO PANATAR	\$114.00	\$342.00
Z37	2000 mm	T9 AUTO PANATAR*	\$130.00	\$390.00
PANATAR				
Z31	35 mm	T2.5/T4 PANATAR	\$40.00	\$120.00
Z32	40 mm	T2.3/T2.5 PANATAR	\$40.00	\$120.00
Z33	50 mm	T2.3/T2.5 PANATAR	\$40.00	\$120.00
Z34	75 mm	T2.5/T4.5 PANATAR	\$40.00	\$120.00
Z35	100 mm	T3/T4 PANATAR	\$40.00	\$120.00
MACRO				
P12	55 mm	T2.5 MACRO PANATAR	\$74.00	\$222.00
PANAFOCALS				
P19	45-95 mm	T4 PANAFOCAL	\$105.00	\$315.00
P18	50-95 mm	T4 PANAFOCAL	\$105.00	\$315.00
ZOOM				
P16	40-120 mm	T4.8 PANAZOOM	\$160.00	\$480.00
Z10	40-200 mm	T4.8 SUPER PANAZOOM	\$160.00	\$480.00
P91	50-500 mm	T5 PANAZOOM	\$120.00	\$360.00
Z30	50-500 mm	T5.6 SUPER PANAZOOM	\$160.00	\$480.00
P59	50-500 mm	T5 ZOOM with Tyler motor	\$100.00	\$300.00
Z14	PANAVISION remote aperture control (for 5-1 and 10-1 SUPER PANAZOOM)		\$10.00	\$30.00
ZOOM LENS ACCESSORIES				
P96	Zoom battery complement 24 V		\$35.00	\$105.00
P97	Battery — type 24NC4B		\$10.00	\$30.00
P68	Charger		\$15.00	\$45.00
P65	Zoom controller holder		\$5.00	\$15.00
P32	— model II		\$10.00	\$30.00

Note: All zoom lenses (anamorphic or spherical) are supplied complete with a Panavision electronic zoom control system.

* Available ex Los Angeles with additional transportation charge.

PANAVISION®

SPHERICAL LENSES and LENS ACCESSORIES

S.F.S. Price Code			Per Day	Per Week
P76	15 mm	T4 SPHERICAL	\$25.00	\$75.00
P42	16 mm	T2.8 SPHERICAL	\$25.00	\$75.00
P99	20 mm	T3 SPHERICAL	\$25.00	\$75.00
P43	20 mm	T4 SPHERICAL	\$25.00	\$75.00
P44	24 mm	T2.8 SPHERICAL	\$25.00	\$75.00
P45	28 mm	T2.8 SPHERICAL	\$25.00	\$75.00
P47	32 mm	T2.8 SPHERICAL	\$25.00	\$75.00
P48	35 mm	T2 SPHERICAL	\$25.00	\$75.00
P50	40 mm	T2 SPHERICAL	\$25.00	\$75.00
P51	50 mm	T2 SPHERICAL	\$25.00	\$75.00
P54	75 mm	T2 SPHERICAL	\$25.00	\$75.00
P55	100 mm	T2.4 SPHERICAL	\$25.00	\$75.00
P57	150 mm	T2.8 SPHERICAL	\$35.00	\$105.00
P88	400 mm	T4 SPHERICAL	\$38.00	\$114.00
P60	500 mm	T4 SPHERICAL	\$47.00	\$141.00
Z08	1000 mm	T8 SPHERICAL	\$50.00	\$150.00
MACRO				
Z22	60 mm	T2.8 MACRO SPHERICAL	\$31.00	\$93.00
P94	90 mm	T2.8 MACRO SPHERICAL	\$31.00	\$93.00
WIDE APERTURE				
Z24	14 mm	T1.9 ULTRA SPEED	\$42.00	\$126.00
Z65	17 mm	T1.9 ULTRA SPEED	\$42.00	\$126.00
P69	17 mm	T1.9 ULTRA SPEED close focus	\$50.00	\$150.00
Z09	20 mm	T1.9 ULTRA SPEED	\$42.00	\$126.00
Z26	24 mm	T1.2 ULTRA SPEED	\$42.00	\$126.00
P46	28 mm	T1.9 SUPER SPEED	\$33.00	\$99.00
Z27	29 mm	T1.2 ULTRA SPEED	\$42.00	\$126.00
Z61	35 mm	T1.6 SUPER SPEED	\$33.00	\$99.00
P49	35 mm	T1.3 ULTRA SPEED	\$42.00	\$126.00
Z49	40 mm	T1.3 ULTRA SPEED	\$42.00	\$126.00
Z55	50 mm	T1 ULTRA SPEED	\$42.00	\$126.00
P52	50 mm	T1.4 SUPER SPEED	\$33.00	\$99.00
P53	55 mm	T1.1 SUPER SPEED	\$33.00	\$99.00
Z15	75 mm	T1.7 SUPER SPEED	\$33.00	\$99.00
P90	100 mm	T1.7 SUPER SPEED	\$33.00	\$99.00
Z60	125 mm	T1.6 ULTRA SPEED	\$42.00	\$126.00
P58	150 mm	T1.8 SUPER SPEED	\$40.00	\$120.00
Z59	150 mm	T1.5 ULTRA SPEED	\$42.00	\$126.00
Z62	200 mm	T2 ULTRA SPEED	\$42.00	\$126.00
P61	300 mm	T2.8 ULTRA SPEED	\$42.00	\$126.00
ZOOM				
P87	20-100 mm	T3.1 PANAZOOM	\$142.00	\$426.00
P63	20-120 mm	T3 PANAZOOM	\$142.00	\$426.00
Z89	20-125 mm	T1.9 ULTRA ZOOM complete	\$200.00	\$600.00
Z45	25-250 mm	T4 SUPER PANAZOOM	\$142.00	\$426.00
P85	25-250 mm	T4 ZOOM	\$90.00	\$270.00
LENS ACCESSORIES				
P21	Electronic zoom controller (additional)		\$14.00	\$42.00
P20	Focus control (type FF)		\$9.00	\$27.00
P62	Focus control, high speed		\$17.00	\$51.00
P79	Flange focal depth gauge set		\$10.00	\$30.00
L39	Inclining Prism, Samcine, for Low/high angle cinematography		\$33.00	\$99.00
L12	—large, for wide angle & zoom lenses		\$39.00	\$117.00
P34	Matte box/lens hood front flap		\$9.00	\$27.00
Z29	Range extender, 2 times focal length		\$32.00	\$96.00
F51	Split diopter system, Samcine		\$16.00	\$48.00



ARRIFLEX 35BL CAMERAS

S.F.S. Price Code		Per Day £	Per Week £
C05	ARRIFLEX 35BL III CAMERA, (24/25 fps crystal speeds, adjustable shutter, 5-32 fps variable speeds, digital footage counter and fps indicator), complete with 2 x 400 ft. magazines, 2 x 12 V 7 Ah batteries and charger, 2 x battery cables, 2 x pulse cables, variable speed control unit, remote switch cable, sliding base plate, changing bag, waterproof cover, measuring tape, Samcine calculator, 85 & 85B filters, etc.	210.00	630.00
C04	As above, but camera body only available with full outfit only	140.00	420.00
Note: The above camera may be fitted with an Arri SB or PL or BNCR lens mounting			
M24	Aperture Plate, additional, full aperture	8.00	24.00
A94	Barnies, Soft, for 400 ft. magazine	5.00	15.00
M49	— Soft, for 1000 ft. magazine	6.00	18.00
A81	— Lead lined for 1000 ft. magazine	10.00	30.00
A04	— Magazine, heated, 400 ft.	12.00	36.00
A09	— 1000 ft.	12.00	36.00
A47	Batteries, Belt, 12 V 4 Ah, with charger	9.00	27.00
G39	— 2 x additional 12 V 7 Ah and charger	16.00	48.00
F51	Diopters, full cover or split, Samcine, set of 5	16.00	48.00
Dollies and Cranes, see pages 50-53			
C09	Electronic Accessories, Camera Projector Auto Synchroniser	18.00	54.00
M65	— External Sync Unit, complete with remote switch, phase shifter and transformer (for sync to 50-60 Hz TV)	18.00	54.00
M45	— Phase Shifter (to film 50 Hz TV)	18.00	54.00
M05	— Digital Speed and Footage Display	18.00	54.00
M66	— Single shot unit	18.00	54.00
Filters, see pages 40-44			
A20	Follow Focus, Arri Universal system	21.00	63.00
A05	— Arri lightweight system complete with matte box support	13.00	39.00
Front Projection, see page 47			
Heads, see page 48			
V36	Heated Eyecup, (stops misting-up)	4.00	12.00



ARRIFLEX 35BL CAMERAS cont.

S.F.S. Price Code		Per Day £	Per Week £
A55	Image stabiliser, Arri	66.00	198.00
L39	Inclining Prism, Samcine, (for low/high angle shooting)	33.00	99.00
L12	— large, for wide angle & zoom lenses	39.00	117.00
T02	Helicopter Mounts, Tyler anti-vibration system. Complete with motorised zoom and focus controls, Middle type	\$275.00	\$825.00
T11	— Heated Flying Suit, 24 V, small, medium or large	16.00	48.00
G05	— Batteries, 2 x 24 V 20 Ah and charger for above	26.00	78.00
Lenses, see pages 24-25			
M41	Magazines, 400 ft., additional,	each	18.00
A77	— 1000 ft.,	each	26.00
L68	Matte Box, Samcine 6.6 in. system		12.00
A03	— 4 in., Arri type		51.00
Tripods, see page 49			
J02	TV Viewfinders, with Philips LDH 26 TV camera	80.00	240.00
J04	— With Aaton TV camera	120.00	360.00
J10	— On board 1.5 in. TV monitor	11.00	33.00
M51	Viewfinder Extension, Samcine, with viewing filters	18.00	54.00



ARRIFLEX 35III CAMERAS

S.F.S. Price Code		Per Day £	Per Week £
C06	ARRIFLEX 35III CAMERA (24/25 fps crystal control, 6-50 fps variable speeds) complete with pivoting viewfinder door, lightweight matte box and adaptor, 3 x 400 ft. magazines, 2 x 12 V 7 Ah batteries and charger, 2 x battery cables, changing bag waterproof cover, measuring tape, 85 & 85B 3 in. sq. filters etc.	128.00	384.00
C47	As above but with fixed viewfinder door	108.00	324.00
M24	Aperture Plate , additional, full aperture	8.00	24.00
M25	Barnies , all weather	4.00	12.00
A01	– Lead lined	10.00	30.00
A46	– Soft	7.00	21.00
A93	– Soft for shoulder magazine	7.00	21.00
A45	– Heated, 110 or 240 V	12.00	36.00
M17	– Waterproof	3.00	9.00
M30	– White cloth	2.00	6.00
A47	Batteries , Belt 12 V 4 or 7 Ah, with charger	9.00	27.00
G39	– 2 x additional 12 V 7 Ah and charger	16.00	48.00
F51	Dioptrs , full cover or split, Samcine, set of 5	16.00	48.00
	Dollies and Cranes , see pages 50-53		
A22	Door , additional, hand holdable type	6.00	18.00
M68	Electronic Controls , 50-100 fps High Speed Unit, 24 V includes 2 x additional 12 V 7Ah batteries	25.00	75.00
C09	– Camera Projector auto synchroniser	18.00	54.00
M65	– External Sync Unit, complete with remote switch, phase shifter and transformer (for sync to 50-60 Hz TV)	18.00	54.00
M45	– Phase shifter, to film 50 Hz TV	18.00	54.00
M05	– Digital Speed and Footage Display	18.00	54.00
M66	– Single shot unit	18.00	54.00
	Filters , see pages 40-44		
A20	Follow Focus , Arri Universal system	21.00	63.00
A05	– Arri lightweight system	13.00	39.00
A54	– Samcine Arri IIC auto focus type with adaptor	11.00	33.00
	Front Projection , see page 47		
	Heads , see page 48		
V36	Heated Eyecup (stops misting-up)	4.00	12.00
A55	Image Stabiliser , Arri	66.00	198.00
L39	Inclining Prism , Samcine, (for low/high angle shooting)	33.00	99.00
L12	– large, for wide angle & zoom lenses	39.00	117.00



ARRIFLEX 35III CAMERAS cont.

S.F.S. Price Code		Per Day £	Per Week £
	Helicopter Mounts , Tyler anti-vibration system. Complete with motorised zoom and focus controls		
T02	– Middle type	\$275.00	\$825.00
T11	– Heated Flying Suit, 24 V, small, medium or large	16.00	48.00
G05	– 2 x 24 V batteries and charger for above	26.00	78.00
	Lenses see pages 24-25		
A40	Magazines , 200 ft. set of 2	6.00	18.00
A42	– 400 ft., additional set of 2	9.00	27.00
A43	– 400 ft., Samcine shoulder type, set of 2	12.00	36.00
A32	– 1000 ft. set of 2	18.00	54.00
L68	Matte Boxes , Samcine, 6.6 in. system	12.00	36.00
A03	– 4 in., Arri type	17.00	51.00
	Rain Deflectors , Samcine spinning disc type		
M09	– Heavy duty	72.00	216.00
M82	– Hand-holdable	36.00	108.00
G19	Remote Control Cable , 150 ft.	5.00	15.00
U02	Splash Box , Samcine waterproof box to protect camera at surface level	20.00	60.00
A48	Support Systems , Samcine shoulder bracket	5.00	15.00
A49	– Arriflex shoulder pod	3.00	9.00
A50	– Prenzel	5.00	15.00
A51	– Fleximount	6.00	18.00
	Tripods , see page 49		
J02	TV Viewfinder , Samcinevision with Philips LDH 26 TV camera	80.00	240.00
J04	– Samcinevision with Aaton TV camera	120.00	360.00
J10	– On board 1.5 in. TV monitor	11.00	33.00
U04	Underwater Housing , Al Giddings	210.00	630.00
J02	– Samcinevision TV viewfinder for above	80.00	240.00
U03	– Underwater light, 250 W with integral battery, complete with charger	20.00	60.00
J66	– Underwater TV monitor, for use with Samcinevision TV viewfinder system	16.00	48.00
	Viewfinders ,		
A38	– Orientatable, Samcine any angle type	10.00	30.00
A37	– Periscope Arriflex type	8.00	24.00
M51	– Extension, BL type, Samcine, with viewing filters	18.00	54.00
V17	– Monocular, Samcine sport side finder	5.00	15.00



ARRIFLEX IIC CAMERAS

S.F.S. Price Code		Per Day £	Per Week £
C43	HARD FRONT ARRIFLEX IIC CAMERA , with Samcine single SB or BNCR lens port, complete with bellows matte box, 16 V variable speed motor, 2 x 16 V 7 Ah batteries and charger, 2 x battery cables, 3 x 400 ft. magazines, changing bag, waterproof cover, measuring tape, 85 & 85B 3 in. sq. filters, Samcine adaptor to flat top tripod heads	35.00	105.00
C20	As above but three lens turret type	30.00	90.00
C94	HIGH SPEED ARRIFLEX IIC CAMERA with HARD FRONT lens mounting complete with 32 V high speed motor 4 x 16 V 7Ah batteries and 2 x chargers. Otherwise as regular IIC	55.00	165.00
C24	As above but three lens turret type	50.00	150.00
C96	VARIABLE SHUTTER ARRIFLEX IIC CAMERA , with HARD FRONT lens mounting, 0-165° adjustable shutter, Otherwise as regular IIC	50.00	150.00
C23	As above but three lens turret type	45.00	135.00
Note: Arriflex IIC cameras may usually be supplied with a 172.8° shutter for 24 fps/50 Hz HMI filming upon request.			
M25	Barnies , All weather	4.00	12.00
A46	— Soft	7.00	21.00
A93	— for throated magazines	7.00	21.00
A45	— Heated, 110 or 240 V	12.00	36.00
A84	— lead lined for noise reducing	10.00	30.00
M30	— White, for 400 or 200 ft. magazines	2.00	6.00
A47	Batteries , belt, 16 V 4 Ah, with charger	9.00	27.00
G18	— 2 x 16 V 7 Ah and charger	16.00	48.00
G06	— 32 V for high speed operation, (complement of 4 x 16 V 7 Ah, series cable and 2 x chargers)	32.00	96.00
G57	Cables , camera, with in-line switch, 4 or 15 ft.	3.00	9.00
G19	— remote control, 150 ft.	5.00	15.00
F51	Diopters , full cover or split, Samcine, set of 5	16.00	48.00
Dollies, Cranes , see pages 50-53			
Filters , see pages 40-44			
A20	Follow Focus , Arri Universal system	21.00	63.00
A54	— Samcine auto-focus type (2 x 3 or 4 in. sq. rotating filters)	11.00	33.00
Heads , see page 48			
V36	Heated Eyecup (stops misting-up)	4.00	12.00
Helicopter Mounts , Tyler, complete with motorised zoom and focus controls			
T02	— Middle type	\$275.00	\$825.00
T11	— Heated Flying Suits, 24 V, small, medium or large	16.00	48.00
G05	— 2 x 24 V batteries & charger for above	26.00	78.00
A55	Image Stabiliser , Arri	66.00	198.00



ARRIFLEX IIC CAMERAS cont.

S.F.S. Price Code		Per Day £	Per Week £
L39	Inclining Prism , Samcine,	33.00	99.00
L12	— large, for wide angle & zoom lenses	39.00	117.00
Lenses , see pages 24-25			
A40	Magazines , 200 ft. set of 2	6.00	18.00
A42	— 400 ft., additional set of 2	9.00	27.00
A43	— 400 ft., Samcine shoulder type, set of 2	12.00	36.00
M21	— Pistol grip system to use with above	6.00	18.00
L68	Matte Box , Samcine 6.6 in. system (2 x 6.6 in. sq. and 6 in. dia. rotating filter holders)	12.00	36.00
M20	Motors Crystal control, 24/25 fps, 16 V	20.00	60.00
A33	— Constant speed, 24 or 25 fps, 16 V	5.00	15.00
A35	— Variable speed 10-32 fps, 16 V	5.00	15.00
Q83	— Slow speed control, down to 5 fps	6.00	18.00
A36	Motor adaptors , Side mount, Cine-60 type	9.00	27.00
M39	— Back mount, ITC type	9.00	27.00
M09	Rain Deflectors , Samcine spinning disc type	72.00	216.00
M82	— hand holdable model	36.00	108.00
U02	Splash Box , Samcine, surface water protection	20.00	60.00
A48	Support Systems , Samcine shoulder bracket	5.00	15.00
A49	— Arriflex shoulder pod	3.00	9.00
A50	— Prenzel	5.00	15.00
A51	— Fleximount	6.00	18.00
A44	— Samcine Swan-neck adaptor to flat top tripod and head with provision for support bars (also available with adaptor to take Mitchell side finder)	3.00	9.00
Tripods , see page 49			
J02	TV Viewfinders , Samcine, with Philips LDH 26 video camera	80.00	240.00
J04	— with Aaton TV camera	120.00	360.00
J10	— On board 1.5 in. TV monitor	11.00	33.00
U04	Underwater housing , Al Giddings	210.00	630.00
U03	— Underwater light, 250 W with integral battery, complete with charger	20.00	60.00
A38	Viewfinder , orientatable, Samcine type	10.00	30.00
A37	— Periscope, Arriflex type	8.00	24.00
M51	— Extension, Samcine 35BL type, with viewing filters, may be used with either of above	18.00	54.00
V17	— Monocular, Samcine sport side finder	5.00	15.00
A99	— 'Italian' door, Samcine (incorporates magnifier optics and viewing filters and has provision for attaching Samcinevision TV viewfinder system)	27.00	81.00
V02	— Mitchell non-reflex side finder (for use with modified Samcine Swan-neck adaptor)	18.00	54.00
A69	— Continental type large image door	27.00	81.00



FIXED FOCAL LENGTH LENSES for 35 mm ARRIFLEX CAMERAS

S.F.S. Price Code			Per Day £	Per Week £
WIDE APERTURE LENSES				
V79	18 mm	T1.5 CANON	33.00	99.00
L50	24 mm	T1.6, 35, 55, 85 mm T1.3 CANON set of 4	60.00	180.00
L57	18 mm	T1.4 ZEISS HIGH SPEED	33.00	99.00
L53	25, 35, 50	& 85 mm T1.4 ZEISS HIGH SPEED, set of 4	70.00	210.00
W28		— as above, but T1.3 — Mk II type	100.00	300.00
A90		— extension tubes for above	4.00	12.00
WIDE ANGLE LENSES				
L04	9.8 mm	T2.3 KINOPTIK TEGEA	15.00	45.00
L21	12 mm	T2.3 SAMCINE	25.00	75.00
L22	14 mm	T2.8 SAMCINE	25.00	75.00
L07	14.5 mm	T3.5 ANGENIEUX RETROFOCUS	9.00	27.00
L78	16 mm	T2.4 ZEISS DISTAGON	25.00	75.00
V18		— diopters for above, set of 2	5.00	15.00
L45	18 mm	T2.8 CANON	25.00	75.00
L11	18 mm	T2.2 COOKE SERIES III	9.00	27.00
STANDARD LENSES				
V37	25, 32, 40, 50 & 75 mm	T2.3 SAMCINE COOKE set of 5	20.00	60.00
L41		— as above but Samcine close focus- sing	60.00	180.00
L84	30 mm	f/3.5 HASSELBLAD	15.00	45.00
L86	40, 50, 80,	120 mm HASSELBLAD set of 4	50.00	150.00
L62		— Bellows extension for above	14.00	42.00
L25	100 mm	f/2.5 COOKE DEEPFIELD	8.00	24.00
MACRO LENSES				
L56	18 mm	T2.2 COOKE SPEED PANCHRO	11.00	33.00
L42	18 mm	COOKE, Samcine close focussing	20.00	60.00
L19	40 mm	f/2.8 MACRO-KILAR	7.00	21.00
L67	55 mm	T2.8 SAMCINE MACRO	12.00	36.00
L28	75 mm	T2.3 COOKE	6.00	18.00
L24	90 mm	f/2.8 MACRO-KILAR	7.00	21.00
L73		— Extension tubes for above	4.00	12.00
L80	90 mm	f/2.8 SAMCINE 121	11.00	33.00
W30	100 mm	COOKE, Samcine close focussing	20.00	60.00
L71	100 mm	f/2 KINOPTIK APOCHROMAT	13.00	39.00
L18	100 mm	T4 LEITZ ELMAR-R	13.00	39.00
L20	200 mm	T4 MICRO-NIKKOR 1F	13.00	39.00
LONG FOCAL LENGTH LENSES				
L65	135 mm	f/2 CANON	25.00	75.00
L31	135 mm	T2 ZEISS HIGH SPEED	25.00	75.00
L83	135 mm	f/1.5 CINETAR	25.00	75.00
L32	152 mm	T3.2 COOKE TELEPANCHRO	9.00	27.00
L35	180 mm	f/1.3 ZOOMAR	33.00	99.00
L05	200 mm	f/2.8 CANON	45.00	135.00
V72	250 mm	f/5.6 HASSELBLAD	13.00	39.00
L58	300 mm	f/2.8 CANON (600 mm T5.6 with 2 x range extender supplied)	57.00	171.00
L96	400 mm	f/2.8 CANON	65.00	195.00
L40	400 mm	f/4.5 CANON	50.00	150.00
V73	500 mm	f/8 HASSELBLAD	13.00	39.00
L59	600 mm	f/4.5 CANON	55.00	165.00
L63	800 mm	f/5.6 CANON	60.00	180.00
L44	1000 mm	f/8 ASAHI TAKUMAR	55.00	165.00
MULTI-FOCAL LENGTH LENS OUTFIT				
L34	TELESTIGMA: 175 mm f/3.5, 225 mm f/4.5, 250 mm f/5, 315 mm f/6.3		10.00	30.00

ZOOM LENSES for 35 mm ARRIFLEX CAMERAS



S.F.S. Price Code			Per Day £	Per Week £
V33	18-100 mm T5.2 SAMCINE WIDE ANGLE, hand holdable, with light-weight sunshade, 2 x 3 in. sq. filter holders 85 & 85B filters		80.00	240.00
V47	— Remote focus and zoom controls, Heden		18.00	54.00
L98	20-60 mm T3.1 COOKE VARO PANCHRO		80.00	240.00
L93	20-100 mm T3.1 COOKE VAROTAL with 6.6 in. matte box		100.00	300.00
L10	— 40-200 mm range extender for above		8.00	24.00
F88	— Diopters, ful. cover, set of 6 for above		16.00	48.00
V47	— Remote focus and zoom controls, Heden		18.00	54.00
L64	20-120 mm T2.9 ANGENIEUX with 6.6 in. matte box		100.00	300.00
L94	— 40-240 mm range extender for above		8.00	24.00
F95	— Diopters, full cover, set of 5 for above		16.00	48.00
L66	22-220 mm T2.5 SAMCINE-ANGENIEUX WIDE APERTURE with 6.6 in. matte box		100.00	300.00
F51	— Diopters, set of 5, for above		16.00	48.00
M76	25-250 COOKE T3.1 SUPER CINE-VAROTAL		130.00	390.00
L54	25-250 mm T3.9 ANGENIEUX with 2 x diopters, 40-400 and 50-500 mm range extenders, 2 x Series 10 filters (85 & 85B), gelatine filter cutter and holder and circular sunshade		33.00	99.00
L27	25-250 mm T4 SAMCINE or COOKE CINE VAROTAL, with 40-400 and 50- 500 mm range extenders, 6.6 in. matte box, gelatine filter holder & cutter		100.00	300.00
W27	As above, Mk II type		130.00	390.00
F87	— Diopters, set of 5, for above		16.00	48.00
L61	25-500 mm T9 SAMCINE 20-1		90.00	270.00

Note: All 35 mm type zoom lenses are supplied complete with electric zoom controls, an adequate support system and a suitable matte box/sunshade.

See page 37 for optical accessories



MITCHELL S35 MK II CAMERAS

S.F.S. Price Code		Per Day £	Per Week £
C07	MITCHELL S35 Mk II (170° shutter) CAMERA with matte box, 2 x 4 in. sq. filters(85 & 85B), 24 V d.c. governed variable speed motor, 2 x 24 V 7 Ah batteries and charger, 3 x 400 ft. or 3 x 1000 ft. magazines, changing bag, measuring tape, waterproof cover, provision for fitting Samcinevision TV viewfinder. With BNCR or S35 lens port	121.00	363.00
C17	As above but 205° shutter	132.00	396.00
A25	Barnies , soft, for 400 ft. magazine	7.00	21.00
A23	— soft, for 1000 ft. magazine	7.00	21.00
M48	— soft for variable speed motor	5.00	15.00
M27	— all weather cover	4.00	12.00
M33	— white cloth, for 400 ft. magazine	2.00	6.00
M31	— white cloth, for 1000 ft. magazine	2.00	6.00
A24	— heated, 110 or 220 V a.c.	14.00	42.00
G40	Batteries , 2 x additional 24 V 7 Ah and charger	23.00	69.00
G46	— belt, 24 V 7 Ah	11.00	33.00
G55	— additional 30 V 10 Ah	11.00	33.00
F51	Diopters , full cover or split, Samcine, set of 5	16.00	48.00
	Dollies and Cranes , see pages 50-52		
A29	Extension Tubes , Mitchell S35 mount type	5.00	15.00
A15	— Kowa lens type	5.00	15.00
	Filters , see pages 40-44		
A02	Frame punch , Mitchell	5.00	15.00
L39	Inclining Prism , Samcine, (for low/high angle shooting)	33.00	99.00
L12	— large, for wide angle & zoom lenses	39.00	117.00
	Heads , see page 48		
T02	Helicopter Mounts , Tyler anti-vibration system complete with motorised zoom and focus controls, Middle type	\$275.00	\$825.00
T11	— Heated Flying Suits, 24 V, small, medium or large	16.00	48.00
G05	— 2 x 24 V batteries and charger for flying suits	26.00	78.00

MITCHELL S35 MK II CAMERAS cont.



S.F.S. Price Code		Per Day £	Per Week £
	Lenses , see pages 28-29		
A26	Magazines , additional, 1000 ft., set of 3	14.00	42.00
A27	— additional, 400 ft., set of 3	14.00	42.00
A28	— 400 ft. inverted, complete with pistol hand-grip and tripod adaptor, set of 3	14.00	42.00
L68	Matte Box , Samcine 6.6 in. system	12.00	36.00
A07	Motors , Fries, Crystal, high & low speed and single shot type, 24/25 fps, 4-120 fps stepped speeds, 28 V d.c.	99.00	297.00
A89	— Crystal controlled CPD type, (24/25 fps), 6-32 fps variable speeds, 28 V d.c.	72.00	216.00
A34	— Any speed, Samcine Digital type. Any preselectable speed 24-120 fps, reversible, 30 V d.c.	96.00	288.00
A86	— High speed, 32-120 fps, 30 V d.c.	80.00	240.00
A21	— High speed, 32-120 fps, 240 V a.c.	39.00	117.00
A08	— Single shot (1 fps or individual frames), 240 V a.c.	72.00	216.00
A87	— Intervalometer for use with single shot motor	30.00	90.00
	Note: All d.c. motors are supplied complete with two suitable batteries and a charger.		
	Optical Accessories ,		
L69	— 'Fish-eye' lens attachment, Spiratone	15.00	45.00
L70	— Multi-image outfit, Astro	50.00	150.00
M09	Rain Deflector , spinning disc type, heavy duty complete with 2 x 28 V 7Ah batteries	72.00	216.00
	Tripods , see page 49		
J02	TV Viewfinders , Samcinevision with Philips LDH 26 video camera	80.00	240.00
J04	— As above, with Aaton TV camera	120.00	360.00
J10	— On board 1.5 in. TV monitor	11.00	33.00
V02	Viewfinders , Mitchell side finder	18.00	54.00
V03	— Samcine periscope for above	6.00	18.00
V17	— Monocular, Samcine sports side finder	5.00	15.00
A78	— orientatable	24.00	72.00



FIXED FOCAL LENGTH LENSES for MITCHELL CAMERAS

S.F.S. Price Code			Per Day £	Per Week £
WIDE ANGLE LENSES				
L09	15 mm	T4 KOWA CINE-PROMINAR	13.00	39.00
L45	18 mm	T2.8 CANON	25.00	75.00
L14	20 mm	T2.6 KOWA CINE-PROMINAR	13.00	39.00
L13	20 mm	T2.3 B & L SUPER BALTAR	13.00	39.00
WIDE APERTURE LENSES				
V79	18 mm	T1.5 CANON	33.00	99.00
L50	24 mm	T1.6, 35, 55, 85 mm T1.3 CANON set of 4	60.00	180.00
STANDARD LENSES				
L77	25, 35, 50, 75 mm	B & L SUPER BALTAR set of 4	30.00	90.00
L84	30 mm	f/3.5 HASSELBLAD	15.00	45.00
L43	25, 32, 40, 50, 75 mm	KOWA set of 5	30.00	90.00
L26	100 mm	T2.6 KOWA CINE-PROMINAR	13.00	39.00
L86	40, 50, 80, 120 mm	HASSELBLAD set of 4	50.00	150.00
L62		— Bellows extension and lens shade for Hasselblad lenses	14.00	42.00
MACRO LENSES				
L67	55 mm	T2.8 SAMCINE MACRO	12.00	36.00
L24	90 mm	f2.8 MACRO-KILAR	7.00	21.00
L73		— Extension tubes for above	4.00	12.00
L18	100 mm	T4 LEITZ ELMAR-R	13.00	39.00
L20	200 mm	T4 MICRO-NIKKOR 1F	13.00	39.00
LONG FOCAL LENGTH LENSES				
L65	135 mm	f/2 CANON	25.00	75.00
L33	152 mm	f/2.8 B & L SUPER BALTAR	13.00	39.00
L05	200 mm	f/2.8 CANON	45.00	135.00
V72	250 mm	f/5.6 HASSELBLAD	13.00	39.00
L58	300 mm	f/2.8 CANON (600 mm T5.6 with 2 x range extender supplied)	57.00	171.00
L96	400 mm	f/2.8 CANON	65.00	195.00
L40	400 mm	f/4.5 CANON	50.00	150.00
V73	500 mm	f/8 HASSELBLAD	13.00	39.00
L59	600 mm	f/4.5 CANON	55.00	165.00
L63	800 mm	f/5.6 CANON	60.00	180.00
L44	1000 mm	f/8 ASAHI TAKUMAR	55.00	165.00
MULTI-FOCAL LENGTH LENS OUTFIT				
L34	TELESTIGMA: 175 mm f/3.5, 225 mm f/4.5, 250 mm f/5, 315 mm f/6.3		10.00	30.00
LENS ACCESSORIES				
A15	— Extension rings for Kowa lenses		5.00	15.00
A90	— Macro adaptor, to use with BNCR to Arri SB special Zeiss Super Speed lenses		5.00	15.00

See page 37 for optical accessories



ZOOM LENSES for MITCHELL CAMERAS

S.F.S. Price Code			Per Day £	Per Week £
ZOOM LENSES				
V33	18-100 mm	T5.2 SAMCINE WIDE ANGLE with 3 in. matte box and 2 x 3 in. sq. filters (85 & 85B)	80.00	240.00
L98	20-60 mm	T3.1 VARO PANCHRO	80.00	240.00
L93	20-100 mm	T3.1 COOKE VAROTAL with 6.6 in. matte box	100.00	300.00
L10		— 40-200 mm range extender for above	8.00	24.00
F88		— Diopters, full cover, set of 6 for above	16.00	48.00
V47		— Remote focus and zoom control, Heden	18.00	54.00
L64	20-120 mm	T2.9 ANGENIEUX with 6.6 in. matte box	100.00	300.00
L94		— 40-240 mm range extender for above	8.00	24.00
F95		— Diopters, full cover, set of 6 for above	16.00	48.00
L66	22-220 mm	T2.5 SAMCINE-ANGENIEUX WIDE APERTURE with silent zoom control and 6.6 in. matte box	100.00	300.00
F51		— Diopters, set of 5 for above	16.00	48.00
L55	24-240 mm	T3.8 ANGENIEUX reflex lens Complete with side finder and 6.6 in. matte box system	100.00	300.00
F50		— Diopters, set of 5 for above	16.00	48.00
M76	25-250 mm	T3.1 COOKE SUPER CINE- VAROTAL	130.00	390.00
L54	25-250 mm	T3.9 ANGENIEUX with 2 x diopters, 40-400 and 50-500 mm range extenders, 2 x Series 10 filters (85 & 85B), gelatine filter holder and cutter and circular sunshade	33.00	99.00
L27	25-250 mm	T4 SAMCINE or COOKE CINE VAROTAL with 40-400 and 50- 500 mm range extenders, 6.6 in. matte box, gelatine filter holder and cutter	100.00	300.00
W27	As above, Mk II type		130.00	390.00
F87		— Diopters, set of 5, for above	16.00	48.00
L61	25-500 mm	T9 SAMCINE 20-1	90.00	270.00

Note: All 35 mm type zoom lenses are supplied complete with electric zoom control, a suitable support system and matte box/sunshade.

See page 37 for optical accessories



PHOTOSONICS, POLAVISION
MISC. 35 mm VISTAVISION CAMERAS

S.F.S. Price Code		Per Day £	Per Week £
C03	PHOTOSONICS 35-4B 416, 833, 1250, 1666 and 2082 fps rotary prism ultra high speed 35 mm camera. Hasselblad, Panavision or BNCR lens mounts (limited back focal distance and f/2.8 maximum aperture) 4 x 1000 ft. magazines, 380 V 50 Hz 3 phase	900.00	1800.00
E05	Rewinder, flat	6.00	18.00
C01	PHOTOSONICS 35-4E 6-360 fps intermittent super high speed 35 mm camera with cut frame/boresight viewing accessory, Panavision or BNCR lens mountings, 3 x 1000 ft. magazines, 220-240 V a.c. single phase or 208 V a.c. two phase	450.00	900.00
A53	Magazines, additional 1000 ft. for above each	33.00	99.00
POLAVISION CAMERA			
C 4 9	HIGH SPEED INSTANT ANALYSIS CAMERA Polavision, Super 8, complete with viewer and tripod (B&W film for above, 50 ft. £9.75)	120.00	360.00
MISCELLANEOUS 35 MM CAMERAS			
C33	BELL & HOWELL EYMO Model Q (non-reflex) clockwork driven camera 100 ft daylight spool loading, 25, 50 and 75 mm Cooke Ser. II lenses	25.00	75.00
C34	ECLAIR CAMEMATIC (non-reflex) compact 28 V camera available with BNCR or CA lens mountings. (Arri or Panavision lenses may be used with adaptors). Complete with 25 mm CA mounted lens, 2 x 100 ft. and 1 x 200 ft. magazines, changing bag, etc	50.00	150.00
C32	NEWMAN SINCLAIR MODEL N (reflex) clockwork driven camera. 18, 32 and 75 mm lenses, 4 x 200 ft. magazines, changing bag, etc.	25.00	75.00
A52	Steady sling for above	1.50	4.50
VISTAVISION CAMERAS			
C40	VISTAVISION CAMERA. 8 perforation horizontal frame format, butterfly model. Pellicle reflex viewfinder, 24 V crystal control and variable speed motor, 2 x 400 ft. magazines, 2 x 24 V 20 Ah batteries and charger. May be supplied with Hasselblad, Nikon, Mitchell BNCR or Panavision lens mounts.	200.00	600.00
Lenses: Wide Aperture			
L72	24, 35, 50, 85 mm NIKON set of 4	30.00	90.00
L49	15 mm T3.5 NIKON	15.00	45.00
L60	105 mm T1.8 NIKON	7.00	21.00
L79	135 mm T2 NIKON	7.00	21.00
L46	180 mm T2.8 NIKON	7.00	21.00
L85	- Vistamorph 1.5:1 type anamorphic attachment	20.00	60.00
A41	Magazines, butterfly type, 3 x 400 ft.	20.00	60.00
A56	2 x 1000 ft.	20.00	60.00
C41	VistaVision Projector, cinema type with motor, battery complement and 1 x 1000 ft. magazine	200.00	600.00

S.F.S.
Price
Code

AATON and ARRIFLEX 16M
16 MM CAMERAS



Per Day £ Per Week £

AATON

C29	AATON 7 LTR CAMERA, orientatable viewfinder, integral crystal motor (24-25 fps), variable speeds (6-32 fps), 2 x 400 ft. magazines, 3 x 12 V 1.2 Ah batteries, charger, battery cable, changing bag, soft mag Barney, waterproof cover, lens calculator, measuring tape, etc., pulse cables available on request.	68.00	204.00
C39	AATON CAMERA, modified for Super 16 format	80.00	240.00
M75	- Extension eyepiece for above	7.00	21.00
C26	AATON 7 CAMERA, as C29 but without orientatable eyepiece.	57.00	171.00
C35	As C26 but with 2.8/10-100 T3.1 Zeiss Vario Sonnar zoom lens, 2 x close-up diopters and combination ring, and 85 and 85B filters	80.00	240.00
G07	Batteries, 2 x additional 1.2 Ah and charger	15.00	45.00
A47	- Belt, 12 V 4 Ah and charger	9.00	27.00
G39	- 2 x 12 V, 7 Ah and charger	16.00	48.00
Z58	Floating Camera System, Panaglide, see page 15		
Heads, see page 48			
Lenses, all Arriflex type may be used with an adaptor, see pages 38-39			
C36	Magazine, additional 400 ft.	12.00	36.00
L87	Matte Box, Aaton bellows type	7.00	21.00
L36	- Samcine Universal (2 x 3 in. sq. filters)	7.00	21.00
L91	- Samcine 4 in., (2 x 4 in. sq. filter)	12.00	36.00
L68	- Samcine 6.6 in. (2 x 6.6 in. sq. filters)	12.00	36.00
A19	Prompter, C.P. Cameraprompt	23.00	69.00
Rolls of transparent material £10 each			
A06	Time Code System (LTR only)	15.00	45.00
Tripods see page 49			
J01	TV Viewfinder with battery operated monitor	60.00	180.00
J04	- Aaton, for 7 LTR camera	120.00	360.00
V17	Viewfinder, Monocular, Samcine sport finder	5.00	15.00

ARRIFLEX 16M

T08	ARRIFLEX 16M CAMERA 12-120 mm T2.5 Angenieux zoom lens, 8 V variable speed motor, 2 x 400 ft. magazines, 2 x 8 V 7 Ah batteries, charger, 2 x battery cables, changing bag, waterproof cover, measuring tape, lens calculator, 85 & 85B filters, etc.	25.00	75.00
V36	Heated Eyecup (stops misting-up)	4.00	12.00
T03	Helicopter Mount, Tyler anti-vibration system complete with motorised zoom and focus controls, Mini type	\$165.00	\$495.00
T11	- Heated flying suit, 24 V, small, medium or large	16.00	48.00
G05	- Batteries, 2 x 24 V & charger for above	26.00	78.00
Lenses, see pages 38-39			
T09	Magazines, 2 x additional 400 ft.	7.00	21.00



ARRIFLEX 16 SR CAMERAS

S.F.S. Price Code		Per Day £	Per Week £
C70	ARRIFLEX 16 SR II AUTO EXPOSURE CAMERA with servo operated automatic exposure control coupled to camera speed.* TTL exposure metering, crystal motor (24/25 fps), pan handle remote control switch, 2 x 400 ft. magazines, soft magazine Barney, 3 x 12 V 1.2 Ah batteries, charger, battery cable, changing bag, waterproof cover, lens calculator, 2 x pulse cables available on request	79.00	237.00
C28	As C70 but with 2.8/10-100 mm T3.1 Zeiss Vario-Sonnar zoom lens with automatic diaphragm control, 2 x close-up diopters and combining ring.	102.00	306.00
C91	ARRIFLEX 16SR I AUTO IRIS CAMERA As C70 but servo operated exposure control not coupled to camera speed*	63.00	189.00
C90	As C91 but with 2.8/10-100 mm T3.1 Zeiss Vario-Sonnar zoom lens	86.00	258.00
C81	ARRIFLEX 16SR I CAMERA As C91 but less automatic Iris control	52.00	156.00
C80	As C90 but with 2.8/10-100 mm T3.1 Zeiss Vario-Sonnar zoom lens etc.	75.00	225.00
C56	ARRIFLEX 16 SR II HIGH SPEED AUTO EXPOSURE CAMERA with servo operated automatic exposure control coupled to camera speed.* 10-150 fps continuously variable and 24/25 fps crystal control speeds, complete with variable speed unit. Otherwise as regular Arri 16 SR II camera.	113.00	339.00
C98	ARRIFLEX 16 SR I HIGH SPEED CAMERA As above but less automatic exposure control coupled to camera speed	103.00	309.00
*Possible only with automatic diaphragm control lens			
A97	Barney , lead lined	10.00	30.00
M26	— waterproof	3.00	9.00
G07	Batteries , 2 x additional 1.2 Ah and charger	15.00	45.00
A47	— Belt, 12 V 4 Ah and charger	9.00	27.00
G39	— 2 x 12 V 7 Ah and charger	16.00	48.00
M55	Electronic Accessories , Variable Speed Unit	10.00	30.00
M65	— External Sync Unit and transformer for sync to 50-60 Hz., with remote switch, phase shifter, etc.	18.00	54.00
M45	— Phase Shifter, to film 50 Hz TV	18.00	54.00
C09	— Camera-Projector Auto Synchroniser	18.00	54.00
M05	— Digital Speed and Footage Display	18.00	54.00
M66	— Single shot unit	18.00	54.00
V47	— Remote focus and zoom control, Heden hand grip type	18.00	54.00
V52	— Pan handle control for above	4.00	12.00
Filters, see pages 40-44			
Floating Camera System, Panaglide, see page 15			
A05	Follow Focus Unit , Arri, with lightweight matte box support (lenses must be fitted with gear grip)	13.00	39.00
Front Projection System, Samcine, see page 47			

ARRIFLEX 16 SR CAMERAS cont.
ARRIFLEX 16St CAMERAS

S.F.S. Price Code		Per Day £	Per Week £
M53	Hand Grip , Universal type Heads, see page 48	4.00	12.00
V36	Heated Eyecup (stops misting-up)	4.00	12.00
T03	Helicopter Mount , Tyler anti-vibration system complete with motorised zoom and focus controls, Mini type	\$165.00	\$495.00
T11	— Heated flying suit, 24 V, small, medium or large	16.00	48.00
G05	— Batteries, 2 x 24 V & charger for above	26.00	78.00
A55	Image Stabiliser , Arri	66.00	198.00
L39	Inclining Prism , Samcine Lenses, additional, see pages 38-39	33.00	99.00
L30	— Wide Angle Attachment, Aspheron wide angle supplementary lens. Converts 9.5 & 12 mm Zeiss High Speed lenses to 5.6 & 6.6 mm T1.3	12.00	36.00
C45	Magazine , additional 400 ft. (not for HS model)	12.00	36.00
C25	— H.S. model	20.00	60.00
L36	Matte Box , Samcine, (2 x 3 in. sq. filters)	7.00	21.00
L91	— Samcine 4 in. (2 x 4 in. sq. filters)	12.00	36.00
L68	— Samcine 6.6 in. (2 x 6.6 in. sq. filters)	12.00	36.00
A19	Prompter , C.P. Cameraprompt (Rolls of transparent material £10.00 ea)	23.00	69.00
G19	Remote control cable , 150 ft.	5.00	15.00
Tripods, see page 48-49			
J02	TV Viewfinder system	80.00	240.00
U05	Underwater Housing , Arri Marin type	172.00	516.00
U03	— Underwater Light, 250 W with integral battery, complete with charger	20.00	60.00
M54	Viewfinder , extension, (Samcine) with viewing filters	17.00	51.00
V17	— Monocular, Samcine sport side finder	5.00	15.00

ARRIFLEX
16 St CAMERAS

C52	ARRIFLEX 16St CAMERA , 12.5, 17.5, 25 & 37.5 mm T2 Cooke Kinetel lenses, matte-box, 8 V variable speed motor, 2 x 400 ft. magazines, magazine motor, 2 x 8 V 7Ah batteries & cables, charger, changing bag waterproof cover, lens calculator, measuring tape, 85 & 85B filters, etc.	18.00	54.00
C53	As above but with 12-120 mm T2.5 Angenieux zoom lens, and 2 x close-up diopters in place of Cooke Kinetel lenses.	26.00	78.00
A59	Barney , heated, 240 V a.c., for 400 ft. mag.	11.00	33.00
A60	— Soft, sound, for 400 ft. magazine	4.00	12.00
G27	Battery , 2 x additional 8 V 7 Ah and charger	12.00	36.00
A47	— belt, 8 V 4 Ah and charger	9.00	27.00
G57	Cable , Battery, with in-line switch, 4 or 15 ft.	3.00	9.00
G19	150 ft.	5.00	15.00
V36	Heated Eyecup (stops misting-up)	4.00	12.00
L39	Inclining Prism , Samcine Lenses, additional, see pages 38-39	33.00	99.00
A61	Magazines , 2 x additional 400 ft. and motor	8.00	24.00
L36	Matte Box , Samcine, (2 x 3 in. sq. filters)	7.00	21.00
A62	Motor , Constant speed 24/25 fps, 8 V	4.00	12.00



CP 16, 16 mm PHOTOSONICS and POLAVISION CAMERAS

S.F.S.
Price
Code

Per
Day
£

Per
Week
£

CINEMA PRODUCTS

C30	CP-16/R CAMERA, 12-120 mm T2.5 Angenieux zoom lens, 2 x close-up diopters and combination ring, 24 fps crystal motor, 3 x 400 ft. magazines, 4 x 20 V 550 mAh CP type batteries and charger, changing bag, waterproof cover, measuring tape, lens calculator, 85 & 85B filters, etc.	75.00	225.00
<p>If supplied for use with single system sound, (no extra charge) includes Crystal-sound mag. head and amplifier, AKG/D-109 and AKG/D-160 microphones, headphones and cables.</p>			
G53	Batteries, 4 x additional and 2 x chargers Lenses, additional, all Arriflex mounted lenses may be used with a suitable adapter, see pages 38-39	16.00	48.00
A19	Prompter, C.P. Cameraprompt (Rolls of transparent material £10 ea)	23.00	69.00

PHOTOSONICS

C85	PHOTOSONICS IPDL HIGH SPEED CAMERA, (two speeds, switchable from crystal controlled 24/25 fps to 500 fps in shot) 12-120 mm T2.5 Angenieux zoom lens, 2 x close-up diopters and combination ring, orientatable viewfinder, 2 x 400 ft. magazine, 2 x 30 V 10 Ah batteries, charger, 2 x battery cables, changing bag, waterproof cover, 85 & 85B filters, etc.	125.00	375.00
-----	--	--------	--------

Note: This camera has a prism type reflex viewfinder system and may be fitted with almost any Arri mounted lens.

G55	Battery, Additional 30 V Lenses, additional, most Arriflex mounted lenses may be used. See pages 38-39	11.00	33.00
M38	Magazine, additional 400 ft.	25.00	75.00

POLAVISION

C49	POLAVISION HIGH SPEED ANALYSIS CAMERA AND VIEWER, Super 8 1-400 fps, complete with tripod. Used to check the effect of high or low speed shooting. (B&W film for above, 50ft. £9.75)	120.00	360.00
-----	---	--------	--------

OPTICAL ACCESSORIES



S.F.S.
Price
Code

Per
Day
£

Per
Week
£

V50	Beam Splitter Mirrors (50/50 semi silvered mirrors) — 7½ in. x 5½ in.	6.00	18.00
V19	— 18 in. x 13 in.	11.00	33.00
V44	— 24 in. x 24 in.	16.00	48.00
F50, 51	Diopters, full cover or split, Samcine set of 5	16.00	48.00
V27	— Screw on* set of 9	8.00	24.00
V26	Directors Viewfinders — AGE Mk IV (35 mm spherical: 25-250 mm, 35 mm anamorphic: 50-500 mm, 16 mm: 12-120 mm)	6.00	18.00
V01	— Tewe Mark III type, (35 mm spherical 18.5-100 mm, 35 mm anamorphic: 40-200 mm, 16 mm: 9-50 mm)	4.00	12.00
M57	Duplicating Devices, Duplikin III (to film 2 in. sq. slides) for 16 mm use only	9.00	27.00
M56	— Duplikin IV (to film 16 mm 1:1 'Freeze Frame') for 16 mm use only	9.00	27.00
L92	Electric Zoom Control Motor	8.00	24.00
A39	extension Tubes, Arriflex type, set of 3	4.00	12.00
L73	— 90 mm Macro type set of 4	4.00	12.00
Filter Trays for TV lenses: See page 68			
A80	Ground glass, additional for most cameras	3.00	9.00
L39	Inclining Prism, Samcine, (for low/high angle shooting)	33.00	99.00
L12	— large, for wide angle & zoom lenses	39.00	117.00
A88	Lens Adaptor BNCR camera mount to Arri SB lens mount	4.00	12.00
V51	Light Box with light source to place on front of camera to illuminate costumes or objects made of 3M's Scotchlite retro-reflective material. Fits 6.6 in. matte box support bars.	16.00	48.00
L70	Multi-Image Prisms, Astro, sixteen different effects and dove 'turn-over'/reversing prism, fits 6.6 in. matte box, motorised	50.00	150.00
V30	— B+W, 2½ in. screw-on type*, set of 9	7.00	21.00
Rain Deflector, spinning disc type			
M09	— heavy duty	72.00	216.00
M82	— lightweight hand-holdable	36.00	108.00
L81	38 Range Extender, (2 x & 1.4 x focal length of most zoom and telephoto lenses)	7.00	21.00
V47	Remote focus and zoom control, Heden	18.00	54.00
V28	Soft Focus Attachments, B+W, 2½ in. screw-on type*, set of 3	3.00	9.00
V29	Star Effect Attachments, 2½ in. screw-on type set of 6	6.00	18.00
L69	Wide-Angle Lenses, 'Fish-eye', 120°, fits 37.5 mm Kinetal lens	15.00	45.00
V42	— 'Bird-eye', 360°, complete with prime lenses	18.00	54.00

*The above screw-on optical attachments have a 77 mm external thread and are supplied with adaptors to 72, 67 and 58 mm external threads, Series 9, 70 mm clamp-on and 4 in. sq. They may be fitted directly to any Zeiss Super Speed lens, to most 16 mm zooms or fitted in a 4 in. sq. matte-box.

ZOOM LENSES and ACCESSORIES for 16 mm CAMERAS

S.F.S.
Price
Code

Per
Day
£

Per
Week
£

Note: Most 16 mm cameras may be fitted with Arriflex mounted lenses either directly or by the use of an adaptor. Unless otherwise noted all the lenses listed below are or may be fitted with Arriflex type mounts. Some are or may additionally be fitted with C or CA mounts if required.

Some of the heavier lenses may require additional support, the Samcine Type 180 Universal lens support system may be used to interface and support any heavy lens with any camera.

Many 16 mm Arriflex mounted lenses are available only with the later type Arriflex steel bayonet type mount. By now almost all cameras have been changed to this system but should a lens be required for a camera with the old type lens mount only, the hirer should check that a lens with the old type mount is available and state that such a lens is required.

V25	9-50 mm, T2.5 COOKE VARO-KINETAL	26.00	78.00
L93	9.5-47.5 mm, T1.5 COOKE VARTAL 5:1 with Standard-16 adaptor	100.00	300.00
L75	9.5-57 mm, T1.9 ANGENIEUX 6:1	20.00	60.00
V38	10-30 mm T1.5 COOKE VARO PANCHRO	73.00	219.00
L93	10-50 mm, T1.7 COOKE VARTAL 5:1 with Super-16 adaptor	100.00	300.00
V47	Remote focus and zoom control, Heden, for above	18.00	54.00
L95	10-100 mm, T2 ZEISS VARIO-SONNAR with auto diaphragm control	35.00	105.00
L99	10-100 mm, T3.1 ZEISS VARIO-SONNAR	23.00	69.00
W26	Chrosziel fluid drive unit for above	10.00	30.00
V47	Remote focus and zoom control, Heden hand grip type for above	18.00	54.00
L97	10-150 mm, T2.3/3.2 ANGENIEUX 15:1*	35.00	105.00
L76	12-120 mm, T2.5 ANGENIEUX 10:1*	17.00	51.00
L47	12 - 120 mm T2.5 ANGENIEUX 10:1*, non- motorised	15.00	45.00
V39	12-120 mm, T2.7 CANON MACRO ZOOM	23.00	69.00
L52	12-240 mm, T3.5/4.8 ANGENIEUX 10:1	45.00	135.00
L74	16-44 mm, T1.3 ANGENIEUX 2.8:1*	29.00	87.00
V40	Angenieux telephoto attachment (1.6 times focal length)	12.00	36.00
V41	Angenieux wide angle attachment (0.76 times focal length)*	12.00	36.00
L37	Servo zoom control unit for 16 SR	8.00	24.00

*The Angenieux telephoto and wide angle attachments fit onto the front of these lenses. Exposure must be increased by 1/6 stop to compensate for loss of transmission. With the wide angle attachment there is some vignetting towards the wide angle end of the zoom range which will be less apparent when shooting for TV than when covering the full frame.

FIXED FOCAL LENGTH LENSES for 16 mm CAMERAS

S.F.S.
Price
Code

Per
Day
£

Per
Week
£

WIDE APERTURE LENSES

L29	9.5 mm T1.3 ZEISS HIGH SPEED	16.00	48.00
L51	12, 16 & 25 mm T1.3 ZEISS HIGH SPEED set of 3	45.00	135.00
L30	- Aspheron super wide angle supplementary lens. Converts 9.5 & 12 mm Zeiss High Speed lenses to 5.6 & 6.6 mm T1.3 respectively	12.00	36.00

See optical accessories and filter section for screw-on effect lenses, diopters and filters for Zeiss lenses.

L08	15 mm f/1.3 ANGENIEUX (C mount only)	6.00	18.00
L15	25 mm f/0.95 ANGENIEUX (Cmountonly)	6.00	18.00
L16	25 mm f/0.95 ANGENIEUX (not for Arri 16 BL or Photosonics IPDL)	6.00	18.00
L90	50 mm f/1.5 ANGENIEUX (C mount only)	12.00	36.00

WIDE ANGLE LENSES

L88	3.5 mm f/1.8 CENTURY (not for 16BL, IPDL)	12.00	36.00
L88	3.5 mm f/1.8 CENTURY (C mount only)	12.00	36.00
L01	5.7 mm T2.3 KINOPTIK TEGEA	8.00	24.00
L48	5.9 mm T2 ANGENIEUX	12.00	36.00
L02	8 mm T2.4 ZEISS DISTAGON	14.00	42.00
L03	9 mm T2 COOKE KINETAL	6.00	18.00
L06	10 mm f/1.8 SCHNEIDER CINEGON	11.00	33.00

MACRO LENSES

L19	40 mm f/2.8 MACRO-KILAR	7.00	21.00
L67	55 mm T2.8 SAMCINE MACRO	12.00	36.00
L24	90 mm f/2.8 MACRO-KILAR	7.00	21.00
L73	- Extension tubes for above, per set	4.00	12.00
L80	90 mm f/2.8 SAMCINE 121	11.00	33.00
L71	100 mm f/2 KINOPTIK APOCHROMAT	13.00	39.00
L18	100 mm T4 LEITZ ELMAR R	13.00	39.00
L20	200 mm T4 MICRO-NIKKOR 1F	13.00	39.00

STANDARD LENSES

L17	12.5, 17.5, 25 and 37.5 T2 COOKE KINETAL set of 4	12.00	36.00
L23	75 mm T2.8 COOKE KINETAL	6.00	18.00
L89	100 mm T2.8 COOKE KINETAL (C mount)	6.00	18.00

LONG FOCAL LENGTH LENSES

L65	135 mm f/2 CANON	25.00	75.00
L83	135 mm f/1.5 CINETAR	25.00	75.00
L31	135 mm T2 ZEISS HIGH SPEED	25.00	75.00
L35	180 mm f/1.3 ZOOMAR	33.00	99.00
L05	200 mm f/2.8 CANON	45.00	135.00
L58	300 mm f/2.8 CANON (600 mm T5.6 with 2 x range extender supplied)	57.00	171.00
L96	400 mm f/2.8 CANON	65.00	195.00
L40	400 mm f/4.5 CANON	50.00	150.00
L59	600 mm f/4.5 CANON	55.00	165.00
L63	800 mm f/5.6 CANON	60.00	180.00
L44	1000 mm f/8 ASAHI TAKUMAR	55.00	165.00

MULTI-FOCAL LENGTH LENS OUTFIT

L34	TELESTIGMA: 175 mm f/3.5, 225 mm f/4.5, 250 mm f/5, 315 mm f/6.3	10.00	30.00
-----	---	-------	-------



BATTERIES AND CHARGERS and MISCELLANEOUS PRODUCTION EQUIPMENT

S.F.S.
Price
Code

Per
Day
£

Per
Week
£

BATTERIES AND CHARGERS

Note: all batteries are nickel cadmium unless otherwise noted

G56	7.2 V, 100 mAh, Beaulieu, 2 x and charger	4.00	12.00
A47	8 V, 4 Ah, belt and charger	9.00	27.00
G09	8 V, 7 Ah	4.00	12.00
G08	Charger for above, Samcine	4.00	12.00
G27	8 V, 7 Ah, 2 x and charger	12.00	36.00
G07	12 V 1.2 Ah, 2 x Aaton and charger	15.00	45.00
G07	12 V, 1.2 Ah, 2 x Arri 16 SR and charger	15.00	45.00
G54	12 V, 180 or 250 mAh, 2 x Canon and charger	4.00	12.00
G28	12 V, 1.2 Ah, Eclair ACL	6.00	18.00
G36	12 V, Charger for above	4.00	12.00
G23	12 V, 1.2 Ah, 2 x Eclair ACL and charger	16.00	48.00
A47	12 V, 4 or 7 Ah, belt and charger	9.00	27.00
G26	12 V, 7 Ah	6.00	18.00
G08	12 V, Charger for above, Samcine	4.00	12.00
G39	12 V, 7 Ah, 2 x and charger	16.00	48.00
G03	12 V, 20 Ah Sonnenschein	6.00	18.00
G04	12 V, Charger for above	4.00	12.00
G02	12 V 20 Ah 2 x Sonnenschein and charger	16.00	48.00
A47	16 V, 4 Ah, belt with charger	9.00	27.00
G24	16 V, 7 Ah	6.00	18.00
G08	Charger for above, Samcine	4.00	12.00
G18	16 V, 7 Ah, 2 x and charger	16.00	48.00
G53	20 V, 550 mAh, 4 x CP16 and 2 x chargers	16.00	48.00
G46	24 V, 7 Ah, Belt	11.00	33.00
G33	24 V, 7 Ah	9.00	27.00
G37	24 V, Charger for above, Samcine	5.00	15.00
G40	24 V, 7 Ah, 2 x and charger	23.00	69.00
G47	24 V, 20 Ah Sonnenschein gelly lead-acid	10.00	30.00
G48	Charger for above, Samcine	6.00	18.00
G05	24 V, 20 Ah, 2 x Sonnenschein and charger	26.00	78.00
G41	28 V, 7 Ah, 2 x and charger	30.00	90.00
G55	30 V, 10 Ah, Cyclon sintered plate lead acid	11.00	33.00
G43	Charger for above, Samcine	6.00	18.00
G06	32 V, 7 Ah, 4 x 16 V with series cable and 2 x chargers	32.00	96.00
G30	36 V, 20 Ah Sonnenschein gelly lead acid	12.00	36.00
G31	Charger for above, Samcine	6.00	18.00
A12	36 V, 20 Ah, 2 x Sonnenschein gelly lead acid and charger	30.00	90.00

MISCELLANEOUS PRODUCTION EQUIPMENT

M04	DIRECTORS CHAIR	3.00	9.00
M44	- Folding stool	2.00	6.00
G12	MAINS EXTENSION CABLE, 50 yds.	4.00	12.00
V24	STOP WATCH, calibrated for film footage at 24/25 fps	3.00	6.00
M08	TEA URN	5.00	15.00
G01	TRANSFORMER, 1500 W, 240-110 V a.c.	4.00	12.00
M07	UMBRELLA 48" dia.	2.00	6.00
M10	WADERS, various sizes, per pair	3.00	9.00

FRONT PROJECTION



S.F.S.
Price
Code

Per
Day
£

Per
Week
£

C02	SAMCINE FRONT PROJECTION SYSTEM Base unit complete with mounting slides for camera and projector, 2 x beam splitter mirrors and electronic control systems, etc. May be used with any Golden Panaflex or Panaflex X and with most regular Panaflexes, in conjunction with a Panahead pan and tilt head, and with any Arriflex 35BL, or 16 SR camera mounted on a Worrall head and with any suitable projector	120.00	360.00
C50	- as above but lightweight unit	100.00	300.00
C22	35 mm FULL FRAME, SILENT, REGISTER PIN CINE PROJECTOR , (modified Mitchell BNC), 250 W lamp, crystal controlled motor	260.00	780.00
C51	- As above but lightweight unblimped version	220.00	660.00
C42	35 mm FULL FRAME, HIGH SPEED (12-96 fps), REGISTER PIN CINE PROJECTOR (modified Mitchell S35).		Price T.B.A.
C41	35 mm 8 PERFORATION, HORIZONTAL FRAME, REGISTER PIN, CINE PROJECTOR (modified Vistavision camera). 250 W lamp, 24 V crystal controlled motor. BNCR, Hasselblad, Nikon or Panavision lens mounts and 1000 ft. magazine	200.00	600.00
L85	- 1.5:1 'VISTAMORPH' Anamorphic attachment lens for Vistavision (2.25:1 aspect ratio)	20.00	60.00
C55	35 mm SLIDE PROJECTOR . Modified Carousel with zoom lens. 250 W	20.00	60.00
W11	Dove turn-over prism . Motorised. May be fitted to projector and/or camera lenses.	25.00	75.00
W12	- 2 x Dove turn-over prisms and synchronous motor drive	60.00	180.00
W13	SCOTCHLITE FRONT PROJECTOR SCREENS , 3M type 7610. Various sizes available, details on request. per sq. ft. (Scotchlight Reflective Sheeting is available for outright sale from Samcine Sales Ltd., 303-315 Cricklewood Broadway, London NW2 6PQ, Phone: 450 4557	0.50	1.00

Note: A discount of 50 percent of the above charges is allowed for travelling, setting-up and initial testing without artists.

Providing a suitable camera and head is being used on a particular production it is not necessary to order duplicate equipment for use for Front Projection shooting with the Samcine system. The only additional equipment required is either a Panaflex or an Arriflex Projector-Camera synchroniser unit.



HEADS

S.F.S.
Price
CodePer
Day
£ Per
Week
£

AB = Arri Bowl type tripod fitting
M = Mitchell (or Moy) type tripod fitting
T = Tall tripod legs S = Short tripod legs

FLUID HEADS

H17	RONFORD-BAKER F30 S (double fluid control) M-fitting, otherwise as H05	27.00	81.00
H05	RONFORD-BAKER F15 S (flat balancing plate camera attachment) AB fitting, with Samcine high-hat/AB-M adaptor	22.00	66.00
H12	RONFORD-BAKER F15, (Arri 35 camera attachment) AB fitting, with flat plate with flat plate adaptor and balance slide, Samcine high-hat/AB-M adaptor and lamp stand adaptors	18.00	54.00
H44	RONFORD-BAKER F7, ('L' shape camera attachment), may be used inverted with Samcine paddle mount for ultra low angle shooting or as a nodal head, AB fitting, complete with Samcine high-hat/AB-M adaptor	18.00	54.00
H30	RONFORD-BAKER F4	16.00	48.00
H48	RONFORD-BAKER F3 lightweight, complete with lightweight tripod and metal spreader	14.00	42.00
H43	RONFORD-BAKER F2, as above but lighter	13.00	39.00
H49	SHORT TRIPOD for above	4.50	13.50
H11	O'CONNOR 200, complete with Samcine hi-hat/leveller, M fitting	24.00	72.00
H14	O'CONNOR 150, complete as above	24.00	72.00
H10	O'CONNOR 100, complete as above	12.00	36.00
H19	SACHTLER STUDIO 7 + 7	27.00	81.00
H13	SACHTLER & WOLF, (Arri 35 type)	11.00	33.00

FRICTION HEADS

H16	VINTEN HEAVY DUTY	15.00	45.00
H18	VINTEN LIGHT DUTY	7.00	21.00
H20	ARRIFLEX, (Arri 35 type camera attachment), AB fitting, complete with flat plate adaptor and balance slide, T&S wooden tripods, spreader and Samcine hi-hat/AB-M adaptor	6.00	18.00
H23	KINGSTON, with tubular metal legs	4.00	12.00

GEARED HEADS

H07	SAMCINE-MOY MK III, 13 in. low profile type, M fitting, Vinten type quick-release dovetail camera attachment, 2-speed, integral wedge and camera balance slide, rotatable auxiliary off-set handle gear-boxes, extreme low angle plate and Samcine hi-hat/leveller, M fitting	27.00	81.00
H02	SAMCINE-MOY MK I, 16 in., comp' as above	22.00	66.00
H06	Electric controls for either of the above	11.00	33.00
H01	MOY 16 in., complete with wedge and Samcine hi-hat/leveller, M fitting	20.00	60.00
H15	MOY 10 in., complete, as above	17.00	51.00
H45	MITCHELL HEAVY DUTY, M-fitting	42.00	126.00
H32	MITCHELL CRANK, complete with jacks	11.00	33.00
H04	WORRALL, complete with adaptor plate, wedge and Samcine hi-hat/leveller.	22.00	66.00
M73	- Assistant's gadget box for above	2.00	6.00

TRIPODS and
TYLER MOUNTSS.F.S.
Price
CodePer
Day
£ Per
Week
£

TRIPODS

H38, 58	TUBULAR METAL, Ronford-Baker T or S, AB fitting	4.50	13.50
H25, 55	- M fitting, T or S	4.50	13.50
H37	- GBK, short and baby legs with hi-hat	4.50	13.50
H26, 36	WOODEN, Mitchell or Moy, T or S, M fitting	1.70	5.10
H46	- as above, extra tall	4.50	13.50
H35	- Arriflex, T + S, AB fitting	3.30	9.90
H31	GIMBAL, Samcine, weight operated 'sea-head'	20.00	60.00

Note: All tripods are supplied complete with a spreader

HEAD & TRIPOD ACCESSORIES

D63	AB HI-HAT/AB-M ADAPTOR, Samcine.	3.00	9.00
H39	DOVETAIL PLATE, Vinten, complete with quick-release camera base plate	6.00	18.00
H40	HEAD LOCKING JACKS, set of 2	3.00	9.00
D40	HI-HAT/LEVELLER, Samcine, M fitting	3.00	9.00
D68	HI-HAT, Moy, with base board, M fitting	3.00	9.00
D44	LEVELLING LO-BOY, Samcine, M fitting	3.00	9.00
D43	RISERS, Samcine, 4 or 8 in., M fitting each	3.00	9.00
D35	ROLLING SPIDER	6.00	18.00
H47	SPREADERS, Lightweight Metal, Ronford-Baker	3.00	9.00
H41	- Wooden Banjo type	2.00	6.00
D65	- Canvas, Sand type	2.00	6.00
M13	TRIPOD TIE-DOWN CHAINS	2.00	6.00
H33	TV HEAD ADAPTOR. To use Vinten TV type head on M fitting mounting	5.00	15.00
D38	WEDGES, Fox adjustable, balance slide	7.00	21.00
D62	- Samcine - Fox	9.00	27.00
D37	- Samcine wind-up	6.00	18.00
D39	- fixed, 35°, small or 25° large	3.00	9.00

TYLER MOUNTS

Note: All Tyler prices are expressed in U.S. Dollars

HELICOPTER MOUNTS

T02	TYLER MIDDLE MOUNT Takes Arri 35 IIC with 4:1 zoom lens and any of the above 16 mm or TV cameras	\$275.00	\$825.00
T03	TYLER MINI MOUNT Takes 16 mm or lightweight TV cameras only	\$165.00	\$495.00
T11	- Heated Flying Suits, 24 V, small, medium or large	16.00	48.00
G05	- 2 x 24 V batteries & charger for above	26.00	78.00

SEA MOUNT

T04	TYLER SEA MOUNT Hydraulically operated levelling head particularly suited for use at sea. Takes any lightweight 35 or 16 mm camera	\$800.00	\$2400.00
T05	O'CONNOR 100 HEAD for above	\$30.00	\$90.00



ELEMACK DOLLIES

S.F.S. Price Code		Per Day £	Per Week £
D22	ELEMACK 'CRICKET' DOLLY , single column type, may be raised and lowered in shot. Combined surface and straight track wheels. Accessories include remote control for up and down movement, otherwise as 'Octopus'. Complete with full set of platforms and 220/110 V transformer for electric pump. Runs on same track as Elemack 'Octopus' Spyder dolly (3 ft. 11 in. - 5 ft. 11 in.)	66.00	198.00
D30	ELEMACK 'OCTOPUS' SPYDER DOLLY MK II , with combined surface and track wheels (bogie type track wheels only necessary for curved track). M fitting levelling head, steering/push wheel, counter balance weight, operator's seat, various brackets, side platform etc. Runs on 62 cm (Shoreham) or 36 cm (Corridor) track (3 ft. 9 in. - 5 ft. 11 in.)	48.00	144.00
D29	- Seat and risers set for Elemack Dolly, additional	3.00	9.00
D10	ELEMACK 'ROLLS' PLATFORM DOLLY , surface wheels (bogie type track wheels necessary to run on 88 cm Rolls track). Takes Elemack risers with AB or Seat Base, Samcine Risers with Lo-Boy Base, Sam-Midway Crane or any tripod	28.00	84.00
D41	ELEMACK CORRIDOR PLATFORM DOLLY , takes Elemack risers on AB or seat base, runs on track only	11.00	33.00
D13	ELEMACK 'SAMMY' TRIANGULAR PLATFORM DOLLY , surface wheels only, for use with riser columns on AB base	11.00	33.00

Note: The minimum and maximum height dimensions given are typical. They may be more or less with different camera/head combinations but the rise and fall will remain constant.

ELEMACK ACCESSORIES



S.F.S. Price Code		Per Day £	Per Week £
D99	ELEMACK JONATHAN JIB (CRANE) MK II , foldable for transportation (2 ft. 7 in. - 7 ft. 1 in.)	38.00	114.00
D58	ELEMACK MINI-JIB, MK II , foldable for transportation (3 ft. 2 in. - 6 ft. column lowered, 4 ft. 2 in. - 7 ft. column raised - MkI, as above but not foldable	12.00	36.00
D18	- MkI, as above but not foldable	10.00	30.00
D69	EGRIPMENT CRANE ARM	18.00	54.00
D03	- Extension arm, Arri bowl type	10.00	30.00
	ELEMACK SOLID CAMERA SUPPORTS		
D52	- Elemack Base (AB) for use with Elemack platform dollies	3.00	9.00
D45	- Elemack Star base kit. Star base, adaptor base, lev. head	9.00	27.00
D59	- Elemack Seat Base	3.00	9.00
D36	- Elemack Riser Columns 8, 12 & 16 in. set of 3	14.00	42.00
D15	- Elemack Manual Elevator 2 ft. - 2 ft. 10 in.	10.00	30.00
D19	- Elemack pedestal system	11.00	33.00
D11	- Elemack 3-way levelling head	6.00	18.00
D71	- Zabooka pedestal system	11.00	33.00
D09	ELEMACK SNAKE LOW-ANGLE BRACKET (reduces lens height by 2 ft. 3 in.)	6.00	18.00
D27	ELEMACK TRACK 'Flat-top' foldable, tubular, suitable for 36/62 cm or 62/88 cm widths. 3, 2.3, 1.6 or 0.9 meter (9' 10", 7' 6", 5' 3" or 2' 11") lengths, steel, per foot double run	0.70	2.10
D67	- 'Flat-top' curved tubular, 62 cm, 8 pieces to a full circle per piece	4.50	13.50
D80	- straight tubular, 36 cm (Corridor), 62 cm (Shoreham) or 88 cm (Rolls), 4 ft. or 6 ft. lengths, steel, per foot double run	0.35	1.05
D23	- Curved tubular, 36, 62 or 88 cm, 8 pieces to a full circle, steel, per piece	2.25	6.75
D17	ELEMACK ADAPTORS, Elemack/Arri bowl	5.00	15.00
M60	- as above, side mount type (no loss of height)	6.00	18.00
M59	- as above, Ronford side mount type (no loss of height)	6.00	18.00
D16	- Elemack/Miller bowl	5.00	15.00

Note: Lens heights shown in brackets refer to an average camera on a geared head. If maximum or minimum lens height is critical check when ordering.

D20	ELEMACK BOGIE WHEELS to use with any Elemack Dolly when running on Elemack track. Necessary accessory to run on curved track set of 4	5.00	15.00
D50	ELEMACK ARTICULATED BOGIE WHEELS Improved version of above for use on curved track set of 4	7.00	21.00

Note: The minimum and maximum height dimensions given are typical. They may be more or less with different camera/head combinations but the rise and fall will remain constant.



DOLLIES AND ACCESSORIES

S.F.S. Price Code		Per Day £	Per Week £
CHAPMAN			
D53	CHAPMAN HUSTLER DOLLY	£66.66	£200.00
D64	CHAPMAN PEEWEE DOLLY	£66.66	£200.00

FISHER

D81	FISHER 'TEN' CRAB DOLLY, compact model, complete with platforms and accessories	\$110.00	\$330.00
D72	FISHER 9-100 CRAB DOLLY, complete with platforms and standard accessories. (2 ft. 4 in. - 6 ft. 4 in.) (Two additional carrying handles available on request.)	\$110.00	\$330.00
D77	- Track Wheel Adaptor Kit for use with Elemack 62 cm (Shoreham) tubular and/or flat top track	\$16.00	\$48.00
D74	- Lo-Boy Adaptor, reduces lens height by 10 in.	\$7.00	\$21.00
D31	- Riser, Fisher, 6 in.	\$6.00	\$18.00
D79	- Seat Boom Platform	\$7.00	\$21.00
D76	- Tongue, extends reach by 10 in.	\$7.00	\$21.00
D78	- Double Tongue, extends reach by 20 in.	\$7.00	\$21.00

MISCELLANEOUS DOLLIES ETC.

D01	MOVIOLA CRAB DOLLY, complete with platforms and accessories, (2 ft. 10 in - 6 ft.)	55.00	165.00
D02	- Tongue, extends reach by 12 in.	6.00	18.00
D61	- Tongue with AB fitting	6.00	18.00
D54	- Tongue, adjustable	7.00	21.00
D56	- Tongue, adjustable scaffold tube type	7.00	21.00
D06	PANTHER DOLLY with jib arm	100.00	300.00
D32	VINTEN LOW ANGLE DOLLY. Jib action (1 ft. - 2 ft. 9 in.)	35.00	105.00
D12	TRAY (TABLE TOP) DOLLY, 1 in. high	6.00	18.00
M16	WHEEL CHAIR	7.00	21.00

PLATFORM DOLLIES

D07	BILLY-BOY 5 ft. 4 in. x 4 ft. 7 in. may be used with Sam-Midway crane	29.00	87.00
D57	WESTERN 5 ft. 9 in. x 3 ft. 9 in., with balloon tyres	18.00	54.00
D28	RONFORD 5 ft. 8 in. x 2 ft. 11 in.	14.00	42.00
D04	MOBILE II	12.00	36.00
D05	GEORGE 5 ft. 6 in. x 2 ft. 11 in.,	9.00	27.00
D24	TRACK, channel type, for platform dollies per 22 ft. run	7.00	21.00
D84	- Billy-Boy type, per ft. double run	1.20	3.60

Note: The minimum and maximum height dimensions given are typical. They may be more or less with different cameras/head combinations but the rise and fall will remain constant.

LOUMA CAMERA CRANE by SAMCINE and CAMERA CRANES



S.F.S. Price Code		Per Day £	Per Week £
M11	LOUMA CRANE, by Samcine. Modular and demountable crane carrying a remotely controlled film or TV camera. Boom length variable between 4 and 25 ft. Max. lens height 26 ft. 11 in. above ground level. Max. lens rise and fall 41 ft. 4 in. Max. reach 21 ft. 8 in. When using Louma camera crane with a Panavision X camera see page 11 for custom made Panaflex lens control system and TV viewfinder equipment. See pages 18-33 for suitable Arriflex 35BL, III and 16SR cameras. Interfacing with a light-weight TV Camera is usually very straightforward. Details on request.	400.00	1000.00
M61	Special rate for travel, set-up, dry rehearsals and stand-by	200.00	
J90	- Aaton video camera and control unit	55.00	165.00
J91	- Philips LDH26 camera and control	55.00	165.00
J07	- Lens scale camera	55.00	165.00
J98	Remote focus, zoom and or iris control for non-Panavision lenses, Heden	25.00	75.00
	- Louma Technician: Rates negotiable directly with technician		
D33	SAM-MIDWAY CRANE, principally used with Billy-Boy or Elemack Rolls Dolly (5 ft. rise and fall, max 11 ft., min 2 ft., reach 4 ft. 6 in.). Available with film or TV type camera/seating arrangement	40.00	120.00
D21	Sam-Midway Crane & Billy-Boy Dolly	60.00	180.00
D14	- 12 in. drum-type risers for above	3.00	9.00
D84	Billy-Boy Flat Track, per foot double run	1.20	3.60
	The following cranes are available from Samuelson Lighting Ltd., Dudden Hill Lane, London NW10 2DS. Phone 452 5477		
	SAM MASTER. Vehicle type crane with optional electric drive, rear steering and power counter balancing. Max lens height: 23 ft. Min: 2 ft. 0 in., max rise & fall: 17 ft. 0 in., max reach (with extension) 29 ft. 0 in. (A cancellation fee equal to 1/3 of the booked period will be charged on this vehicle).	per day 230.00	per mile 0.50
	- Heavy duty aluminium track for above, Samcine, per ft. double run	1.10	
	SAM MAJOR. Dolly type crane with hydraulic centre column. Camera height, max: 13 ft. 3 in. min: 3 ft. 4 in., max rise & fall: 7 ft. 9 in. Supplied complete with 40 ft. of 3 ft. 7 in. wide track and delivered on a special low-loader vehicle	110.00	0.45
	- additional track, per ft. double run	0.77	
	TULIP CRANE, light weight, foldable. Camera height, max: 13 ft. 9 in. Min: 2 ft. maximum reach of 12 ft. and capable of supporting two technicians or single technician and video camera	137.50	
	Dolly type crane with pneumatic wheels, studio hard wheels and tracking wheels		

Note: The minimum and maximum height dimensions given are typical. They may be more or less with different camera/head combinations but the rise and fall will remain constant.



RIGGING and GRIP EQUIPMENT

S.F.S.
Price
Code

Per
Day
£

Per
Week
£

RIGGING SYSTEMS

D75	LIMPET MOUNTS , Samcine Super type. Large single suction pad, suitable for attachment to any smooth, non-porous horizontal or vertical surface, standard AB head with patented right angle adjustable base adaptor	10.00	30.00
D42	— Samcine three suction pad type, otherwise as above. AB fitting	7.00	21.00
D42	— Samcine three suction pad type, M fitting	7.00	21.00
D73	— Super Grip, single suction pad type, camera bolts directly onto flat plate	10.00	30.00
H08	MO-KIT , Samcine, with various lightweight plates and beams for attaching cameras and lamps across the bonnet or off the doors of virtually any type of vehicle. Includes adjustable camera attachment	25.00	75.00
M74	— Riser for above	3.00	9.00
M67	PADDLE MOUNT , Samcine (AB type bowl attached to a short length of scaffold tube) complete with adaptor plate to fit directly to camera without use of pan and tilt head	3.00	9.00
H42	SCAFFOLD KIT , Samcine, a case full of short lengths of scaffold tube, clamps and various fixings	20.00	60.00
M64	Scaffold to Mitchell LEVELLER	2.50	7.50
D55	SUSPENDED CAMERA MOUNTING SYSTEM , Samcine, for attachment to overhead rail, etc. Adjustable counterweights and pulleys make camera weightless for 'hand-held' operation	18.00	54.00

GRIP EQUIPMENT

D51	Apple Boxes (Pancakes) 4, 8 & 12 in., set of 3	4.00	12.00
D47	Blockboard , ¾ in. thick, 8 x 4 ft., (please specify if to be used inside or outside on location)	5.00	10.00
D48	— 4 ft. square	4.00	8.00
D46	Dust Sheet , 80 x 100 in.	3.00	9.00
M32	French Flag & Adjustable Arm	1.75	5.25
M12	G-Clamp , various sizes	1.75	5.25
M15	GPO Shelter , for use as camera hide	8.00	24.00
D49	Grips Box , (six 2-4-6's and approx. 44 wedges)	6.00	18.00
M06	Ground Sheet , 6 ft. sq.	2.00	6.00
D60	Tarpaulins , 9 or 12 ft. sq.	6.00	18.00
D70	— 40 x 30 ft.	10.00	30.00
M13	Tie Down Chains	2.00	6.00
M07	Umbrella , 48 in. dia. golf type	2.00	6.00

TRANSPORT



TRANSPORT CHARGES

Long distance shoots: details and quotations available on request.

VEHICLE	FACILITIES	CHARGE FOR VEHICLE ONLY
MERCEDES 408 2½ tonne camera car (This vehicle subject to tachograph legislation)	Front and rear tracking platforms and roof platform	£57.50 per day 45p per mile
MERCEDES 308 1.8 tonne camera car (NOT subject to tachograph legislation)	Front and rear tracking platforms and roof platform	£50.00 per day 40p per mile
FORD TRANSIT 190 LUTON VAN 37 cwt.	with or without shelving units	£52.50 per day 40p per mile
FORD TRANSIT MINI BUS		£50.00 per day 40p per mile
FORD TRANSIT CREW BUS		£57.50 per day 40p per mile
MERCEDES (LOUMA) 608D (Service vehicle to Samcine Louma Crane)		£30.00 per day 55p per mile
All vehicles supplied with driver at a rate of £4.50 per hour. Minimum 8 hours. Overtime pro rata.		
DELIVERY CHARGES		
London	Centre Circle	£15.00
	Inner Circle	£20.00
	Outer Circle	£30.00
Waiting time	5 p.m. — 10 p.m.	£10.00 per hour
	10 p.m. onwards	£13.00 per hour
The following vehicles are available through Samuelson Lighting Ltd. For full details and prices telephone 452 5477.		
CAMERA TRACKING VEHICLES		
CASPER CAR . Custom made American tracking vehicle with camera attachment rails and towing outriggers	per day	per mile
	75.00	0.40
MINIMOOK , Samcine. Custom made six-wheel light weight vehicle developed from a BL Mini-Moke, complete with Elemack and other camera attachments	40.00	0.30
— As above but with Casper type camera attachments	50.00	0.30
LAND-ROVER LOW-LOADER . Custom made 'drive-on' vehicle normally used to transport the Sam-Major Crane and track.	*40.00	0.45

*Not chargeable when hired with Sam Major crane

S.F.S. Price Code		Per Day £	Per Week £
J01	Aaton , for Aaton 16 mm camera	60.00	180.00
J04	Aaton , for Aaton B40, Arriflex 35BL and III & Panavision Panaflex & PSR cameras	120.00	360.00
J90	Aaton , for Louma Crane	55.00	165.00
J02	Philips LDH 26 , for Arriflex IIC, II, 35BL & 16SR, Mitchell S35 Mk II, Panavision Panaflex and PSR cameras and Al Giddings underwater housing	30.00	240.00
J91	Philips LDH 26 for Louma Crane	55.00	165.00

VIDEO RECORDERS

J15	U-MATIC , Sony VO 5800	88.00	264.00
J16	— Sony VO 5850, Edit version	100.00	300.00
J54	— Sony VO 2850	88.00	264.00
J20	— Sony VO 2850, Edit version	100.00	300.00
J44	— Sony VO 4800, portable	48.00	144.00
J64	— As above, with JVC G.71P colour camera	60.00	180.00
J24	VHS , JVC HR 3300, with R.F. tuner	30.00	90.00
J62	— JVC HR 4100, portable with carrying case, 2 x batteries and a.c. adaptor	27.00	81.00
J63	— As above but with JVC G.71P colour camera	48.00	144.00
J56	BETAMAX , Sony SL8000 UB	27.00	81.00

MONITORS — MONOCHROME

J10	1.5 in., Arri, on board monitor, vision only	11.00	33.00
J50	4 in., Sony, 12VDC, directors monitor, vision only	13.00	39.00
J66	4 in., Philips, underwater monitor, vision only	16.00	48.00
J41	9 in., Bluebest, 12 V d.c./240 a.c., with sound	16.00	48.00
J12	9 in., Melford, high definition green phosphor, 12 V d.c./240 V a.c., with sound	22.00	66.00
J18	9 in., Hitachi, 240 V a.c., vision only	15.00	45.00
J03	11 in., Cotron, 240 V a.c., vision only	22.00	66.00
J47	12 in., Bluebest, 12 V d.c./240 V a.c., with sound	16.00	48.00
J23	12 in., Melford, 12 V d.c. & 240 V a.c., with sound, high definition green phosphor	22.00	66.00
J42	14 in., Bluebest, 12 V d.c./240 V a.c., vision only	16.00	48.00
J52	17 in., Bluebest, 12 V d.c./240 V a.c., with sound	16.00	48.00
J08	20 in., Cotron, 240 V a.c., with sound	22.00	66.00
J09	20 in., Melford, 240 V a.c., with sound	22.00	66.00
J69	24 in., Bluebest, 24 V d.c. & 240 V a.c., with sound	22.00	66.00

S.F.S. Price Code		Per Day £	Per Week £
J83	Aperture corrector , vertical and horizontal Electrocraft	22.00	66.00
J36	Cable kit , audio and video, additional	5.00	15.00
J37	— Mains, additional	5.00	15.00
J19	— 3 x cable loom, additional	5.00	15.00
J82	Frame line generator , Continental	11.00	33.00
J07	Louma Crane accessories — lens scale camera	55.00	165.00
J98	— Heden remote focus zoom and/or iris control for non-Panavision lenses	24.00	75.00
J46	R.F. distribution amplifier , 1 in 6 out	9.00	27.00
J77	— 8 way	6.00	18.00
J61	Video equalising amplifier , 1 in 2 out	9.00	27.00
J45	R.F. modulator , Swires crystal controlled, with audio and video cable kit	12.00	36.00
J30	Sync pulse generator , Electrocraft GL 76, with Genlock	27.00	81.00
J05	— JVC	13.00	39.00
J06	Time/slate/Take/2 x frame line and caption generator , Digital	66.00	198.00
J11	Function Generator , programmable Tektronix with power module	100.00	300.00
J57	Trolley unit , folding	10.00	30.00
J49	— monitor, with 3 x shelves	5.00	15.00

VIDEO ACCESSORIES

SAMCINE TV VIEWFINDER CONSOLE UNITS

J84	CONSOLE UNIT , for single camera working, with Sony VO 4800 or JVC CR 4700 U-matic recorder, 6 in. monitor, frame line generator, Tektronix time/slate/take generator, sync pulse generator and camera power pack	200.00	600.00
-----	--	--------	--------



SOUND RECORDERS

S.F.S.
Price
Code

Per
Day
£

Per
Week
£

- Notes: 1. All Nagra recorders are CCIR standard. NAB is available. Details on request.
2. All recorders are supplied with twelve ¼ in. tapes (five with Samskel outfits), more if required and a credit issued for unused tapes upon return.
3. Clients intending to use their own equipment in conjunction with items rented from S.F.S. are advised to check that the inputs are compatible.

S20	NAGRA 4.2L RECORDER , complete with 50/60 Hz crystal, internal synchroniser and frequency meter, Sennheiser MKH 415 or 416, 2 x Sony ECM50 and AKG D-160 microphones with windshields, batteries, table-stands and boom, BMT mixer, QSV 2-speed, ATN-2 mains supply unit, Avo test meter, Beyer DT/96 and DT/48 head phones, 4 x 15 m and 1 x 5 m microphone cables, 2 x 15 m mains extension cables, 2 each mains jumper cables, pulse cables, mixer leads, MKH microphone battery pack, jumper cables, ATN-2 connecting cables and various plug adaptors, spare batteries, waterproof cover, sound report sheets, instruction manual, etc.	50.00	150.00
S22	NAGRA 4.2L RECORDER Comprehensive documentary outfit. Recorder as S20 but with Sennheiser MKH416 and 816 and 2 x Beyer MCE5.11 microphones, complete with windshields, batteries, pistol grips and a pre-amp, 1 x Beyer DT48 headphone, 2 x 15 m and 2 x 5 m microphone cables, mini hand boom, ground sheet, sound report pad, spare batteries etc. in a single case	58.00	174.00
S02	— Standby Nagra - 4.2L recorder only, to accompany either of above outfits as a spare recorder on location	32.00	96.00
S01	NAGRA 4.2L RECORDER . Reduced (Samskel) outfit. Recorder as S20 but with 2 x ECM 50 and 1 x AKG D160 microphones, 1 x Beyer DT48 head phones, 2 x 15 m microphone cables, mini hand boom, ground sheet, sound report sheets, instruction manual, etc., in a single case	34.00	102.00

SOUND RECORDERS cont.



S.F.S.
Price
Code

Per
Day
£

Per
Week
£

S24	NAGRA NQS-L (STEREO) RECORDER , complete with 50/60 Hz crystal and QFMS frequency meter, ATN/2 mains unit, QSLs synchroniser, 2 x Sennheiser MKH microphones, windshields, pistol grips etc, 2 x Beyer DT48 head phones, 4 x 15 m 2 x 10 m and 2 x 5 m microphone cables, 2 x 10 m mains, jumper, QCSE, QCSS and ATN cables, spare batteries, groundsheet, sound report pad, etc.	73.00	219.00
S24	— as above but with additional Neumann SM69 microphone	73.00	219.00
S77	NAGRA ISL/T 2-SPEED RECORDER , complete with 50/60 Hz crystal, 2 x Sony ECM/50 and 1 x AKG D160E microphones with windshields, 2 x 10 m and 1 x 20 m microphone extensions, XLR-M back to back jumper cable, Beyer DT48 headphones, AT1 mains power supply, 8 x spare batteries, ground sheet, instruction manual, etc.	40.00	120.00
S46	NAGRA E (NON SYNC) RECORDER , complete with AKG D160-E microphone and windshield, 2 x 12 m microphone cables Sennheiser headphones, ground sheet, etc	22.00	66.00



SOUND RECORDERS cont. RECORDER ACCESSORIES and SOUND TRANSFER

S.F.S. Price Code		Per Day £	Per Week £
S81	NAGRA III RECORDER (SAMSKEL reduced outfit), complete with internal 50/60 Hz crystal, 2 x AKG D109 Lavalier and 1 x AKG D160 microphones and windshields, 2 x 5 m microphone cables, microphone hand boom, headphones.	22.00	66.00
S83	NAGRA SNN3 RECORDER , complete with 10 Hz or 25 Hz crystal sync generator, Nagrastatic and Sony ECM 50 microphones with windshields, various plugs and jumper leads, Sennheiser 414 headphones, amplifier (fitted in carrying case) 12 spare batteries, etc.	31.00	93.00
S27	— Nagra SMR Microphone for above, enables manual control of Nagra SN microphone input	12.00	36.00
S55	— 2-Channel Mixer, Noriyuki for SN Nagra complete with crystal sync, A-B monitoring, condenser microphone powering	19.00	57.00
S12	PHILIPS N 2214 CASSETTE RECORDER	6.00	18.00

RECORDER ACCESSORIES

S18	LOUDSPEAKER , Nagra DSM-20W	14.00	42.00
S76	MIXER , Sennheiser M101, 4-channel	26.00	78.00
S15	— Nagra, 3 channel type BM	7.00	21.00
S17	— Stellavox, 5 channel stereo type AMI	34.00	102.00
S03	ADO 45 PICO stereo mixer	25.00	75.00
S04	SYNCHRONISER , Nagra type SLO with SVN speed variator	11.00	33.00
S07	STAND for Nagra, complete with base	4.00	12.00

SOUND TRANSFER

SOUND TRANSFER, with equalisation and/or Dolby noise reduction if required, to and from 1/4 in. or Nagra SN tape, 1 7/8, 3 3/4, 7 1/2 and 15 ips., 24 fps or 25 fps, full or half track, 25, 50 or 60 Hz pulse to and from 16 mm mag. film including edge stripe or centre track, 24 fps or 25 fps, 35 mm mag. film, 24 fps or 25 fps.

N02	TO 16 mm MAG. FILM (including stock)	per foot	0.036p
N04	TO 35 mm MAG. FILM (including stock)	per foot	0.040p
N01	TO 1/4 in TAPE (not including stock)	per hour	£20.00

MICROPHONES, RADIO TELEPHONES and LOUD HAILERS



S.F.S. Price Code		Per Day £	Per Week £
CABLE MICROPHONES			
Note: All microphones are supplied with windgags and boom mounts where appropriate.			
S28	AKG/C451/CK1 & CK22 mic kit	14.00	42.00
S26	AKG/C451/CK8 mic kit	12.00	36.00
S34	AKG/C451/CK9 mic kit	13.00	39.00
S13	BEYER MCE 5.11 Lavalier	5.00	15.00
S40	ELECTROVOICE 667A	11.00	33.00
S30	NEUMANN KM/75	9.00	27.00
S31	NEUMANN UN87 mic kit	20.00	60.00
S32	NEUMANN SM69 Stereo mic kit	20.00	60.00
S23	NEUMANN KMR 821 mic kit	20.00	60.00
S33	RCA 1001/D RIBBON MICROPHONE	18.00	54.00
S16	SHOEPS CMT/45U	11.00	33.00
S19	SCHOEPS CMT/46U	13.00	39.00
S09	SCHOEPS CMT/441U	11.00	33.00
S36	SENNHEISER MK/12	5.00	15.00
S06	SENNHEISER MKH/406	11.00	33.00
S99	SENNHEISER MKH/415	11.00	33.00
S14	SENNHEISER MKH/416	11.00	33.00
S29	SENNHEISER MD 441 mic kit	15.00	45.00
S10	SENNHEISER MKH/815	12.00	36.00
S35	SENNHEISER MKH/816	14.00	42.00
S21	SENNHEISER MODULAR MIC SYSTEM	14.00	42.00
S73	SONY ECM50	5.00	15.00
S44	STC 4014 LIP	10.00	30.00

RADIO MICROPHONE OUTFITS

S11	MICRON type 102 with Sony ECM50, Tramm TR50 or Beyer MCE5 microphone transmitter/receiver and aerials	23.00	69.00
-----	---	-------	-------

MICROPHONE BOOMS, STANDS AND CABLES

S48	FILM BOOM, Fisher Series 2-100 (reduced rates for long term hire on application)	\$60.00	\$120.00
S50	TELESCOPIC HAND BOOM, Panamic	2.50	7.50
S92	LAZY-ARM BOOM STAND, AKG	2.50	7.50
S41	FOLDING FLOOR STAND	2.00	6.00
S52	TABLE OR FLOOR STAND	1.50	4.50
S53	EXTENSION CABLE, microphone	50 ft.	2.00
S54		100 ft.	4.00
S93		300 ft.	5.00
			15.00

RADIO TELEPHONES

Note: All RT.s operate on allocated frequencies, and clients are advised that a licence is required to operate radio telephones. Details upon request.

S80	HAND PORTABLE, MOTOROLA Type MX-320, 2.5 W, FM, 2 channel type trans/receive unit with batteries and charger, each	17.00	51.00
S74	— Headset, Motorola, for above, complete with noise cancelling microphone	4.00	12.00
S79	BASE STATION, MOTOROLA MAXAR 25 W, FM, complete with 110-240 V a.c. mains power pack, magnetic aerial and extension lead. May also be operated off 12 V d.c. batteries (not included)	16.00	48.00
S78	— Dipole aerial for above	2.00	6.00
For Public Address Equipment see pages 80-81			
S63	4-WAY INTERCOM SYSTEM	15.00	45.00
S62	LOUDHAILERS , Toal, 10 W	4.00	12.00

EDITING EQUIPMENT

S.F.S. Price Code		Per Day £	Per Week £
EDITING MACHINES			
E01	16 mm STEENBECK ST1601 (4 plate) 11 x 8 1/4 in. screen, 2000 ft. plates, 24/25 fps	40.00	80.00
E14	— as above but ST1601/81 model	52.00	104.00
E16	16 mm STEENBECK ST1600 (4 plate) 8 x 6 in. screen, 1200 or 2000 ft. plates, 25 fps	29.00	58.00
E02	16 mm STEENBECK ST1901 (6 plate) 11 x 8 1/4 in. screen, 1000 ft. plates, 24/25 fps	63.00	126.00
E11	16 mm STEENBECK ST1900 (6 plate) 8 x 6 in. screen, 1000 ft. plates, 25 fps	52.00	104.00
E18	35 mm STEENBECK ST1400 (4 plate) 11 x 8 1/4 in. screen, 1200 or 2000 ft. plates, 25 fps	63.00	126.00
E28	— as above but Academy/anamorphic model, 10 x 7 1/2/20 x 7 1/2 in. screen size	70.00	140.00
E22	35 mm STEENBECK ST1401 (4 plate)	80.00	160.00
E15	35 mm STEENBECK ST1401C/81 (4 plate) Academy/anamorphic model, 10 x 7 1/2 in. 20 x 7 1/2 in. screen sizes (approx), 25 fps 1200 or 2000 ft. plates	86.00	172.00
E13	35 mm MOVIOLA Series 20, Type 79. (Sep mag/com opt model). Large screen, over/under mag heads, transistor amplifier, 24 fps, footage/time counters. With or without take-up arms.	40.00	80.00
E03	As above but without com-opt capability	29.00	58.00
E12	— Anamorphic lens for above	2.00	4.00
SYNCHRONISERS			
E07	16 mm COMPEDITOR, Acmade	17.00	34.00
E08	35 mm COMPEDITOR, Acmade	20.00	40.00
E20	16 mm PIC-SYNC, Acmade, 4-gang. Miniature viewer and three underneath mag-heads (edge/center track). Complete with amplifier	10.00	20.00
E33	As above but motorised	12.00	24.00
E26	16 mm SYNCHRONISER, 4-gang with three over/under edge/centre track mag heads	6.00	12.00
E21	35 mm PIC-SYNC, Acmade, miniature viewer and three underneath magnetic heads. Complete with amplifier	10.00	20.00
E33	As above but motorised	12.00	24.00
E30	35 mm SYNCHRONISER, 4-gang with three overhead magnetic heads. Complete with amplifier	9.00	18.00
E32	35/16 mm DUAL GAUGE SYNCHRONISER, 4-gang with one 35 mm silent gang, three 35 mm overhead magnetic heads, one 16 mm silent gang and one 16 mm overhead magnetic head	15.00	30.00
E04	Amplifier, Tycho	3.00	6.00
JOINERS			
E35	16 mm C.I.R. 'ITALIAN' TAPE JOINER	3.00	6.00
E37	16 mm CEMENT SPLICER	2.00	4.00
E36	35 mm C.I.R. 'ITALIAN' TAPE JOINER	3.00	6.00
E38	35 mm CEMENT SPLICER	3.00	6.00

EDITING EQUIPMENT cont. VIEWING FACILITIES

S.F.S. Price Code		Per Day £	Per Week £
CUTTING BENCHES AND EQUIPMENT			
E40	CUTTING BENCH, transportable	11.00	22.00
E42	REWINDERS, upright, for use with ganged 16 or 35 mm spools or plates. 1000 or 2000 ft. plates supplied on request	4.00	8.00
E41	FILM HORSE, 16 or 35 mm	2.00	4.00
E45	FILM BIN, with cuts rack	4.00	8.00
E50	CAN/SPOOL RACK, tubular unit, 4 ft. wide approximately, with 7 shelves	6.00	12.00
E47	SPOOLS, sel. of 4, 16 or 35 mm	4.00	8.00
V24	STOP WATCH, Heuer, calibrated for film footage at 24 or 25 fps	3.00	6.00
NUMBERING MACHINES			
E51	16 mm ACMADE CODEMASTER, dry transfer tape type	40.00	80.00
E52	— 35 mm	40.00	80.00
E17	— additional block for above	7.00	14.00
E23	16 mm MOY, with 6 digit block	31.00	62.00
E23	35 mm MOY, with 6 or 7 digit block	31.00	62.00
E24	— 8 digit block for above	6.00	12.00

CUTTING ROOMS

Fully equipped cutting rooms are available, details on request.

POST PRODUCTION SERVICES

Editing Services are available from Samuelson Post Productions dept.

PRODUCTION OFFICES

Details on request.

VIEWING FACILITIES

VIEWING THEATRE (at Samcine House)			
N05	35 or 16 mm, single or double head.		
	Per hour, 8.30 a.m. — 5.30 p.m.		£18.00
	Per hour overtime and week-ends — on application		
N07	Minimum charge for transfer or viewing		£12.00



STORES SALES ITEMS

PRODUCTION CONSUMABLES

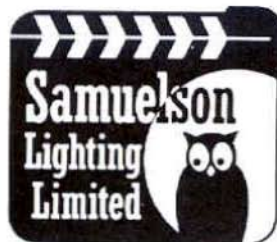
Prices shown do not include VAT and are subject to alteration without notice. When ordering by mail allow extra cost to cover post and packing.

Aerosols:			
Anti-flare	1.95	French Flags and arms	15.50
Black Wrinkle	3.00		
Krylon dulling	4.75	Grey scales	10.00
Foam cleaner, Sprint	1.25		
Inhibisol	2.20	Luggage Elastics, 12"	0.30
Silicone spray	2.50	-18"	0.40
WD40	1.60	-24"	0.50
American Cinematographer		-36"	0.60
Manual	18.00	Location Check Lists	0.30
A.F. Spray	3.45		
Adhesive, Araldite Rapid	1.68	Magazine cards per 100	3.00
		Mag/Sound Report Pads	3.75
Ball pens	0.10	Mutton cloth per roll	3.40
Black Bags, 400 ft. per 100	3.80	Magic Markers	0.58
-1000 ft. per 100	5.80	Measuring Tapes (33 ft.),	23.58
Bobbins, 2" plastic, 35mm	0.15		
-16mm	0.12	Neg Report Pads, carbonised	3.75
Budget Production Forms	5.00		
Binders, A.S.C. Magazine	3.50	Note pads, hard cover	1.05
Bucket Bags	10.00	-spiral	0.30
Calculators, Samcine MK II	18.00	Pentals	0.44
-STD, 16 or 35mm	2.00	Pen-torch	1.00
Camera Prompter scroll	10.00	Plastic bags 4 x 4 ft.	0.85
Chalk per gross	1.75	Pocket tool kit, Samcine	20.00
Chamois leather	3.00		
Changing Bags, 1000'	25.00	Razor blades	0.06
Camera Oil, per 100 ml bot	0.60		
Chinagraph pencils per doz	3.00	Sash cord per hank	1.95
Clapper boards, small	5.00	Selvys (large)	1.00
-medium	6.00	Silicagel (in sachets)	0.20
-large	7.00	Spyders (wooden)	24.00
Call Sheets per 100	2.50		
Continuity Sheets, carbonised		Tape, Camera, 3/4"	per roll 2.25
per pad	3.75	-1"	per roll 2.85
		-2"	per roll 4.45
		-3"	per roll 4.50
Daily Shooting Diaries	2.50	Tape, double sided	
Dubbing Charts per 100	6.00	-1"	per roll 3.50
Dusters, yellow	0.50	-2"	per roll 6.00
Dust-air, trigger assy	12.15		
refills	3.05	Tape, Splicing	
complete	15.20	-No. 1	per roll 0.50
Directors Viewfinder, MKIV	334.00	-No. 2	per roll 1.05
Editing Gloves, per pair	0.50	-No. 3	per roll 1.10
Eye-piece covers,	0.60	-No. 4	per roll 1.20
Elastic bands, asstd, per 1 lb	1.75	Tape, Gaffer, 2"	per roll 2.00
- No. 64	1.90	Waterproof covers	5.00

Film cans:	
35mm 400 ft.	0.90
35mm 1000 ft.	1.00
16mm 100 ft. with day-light loading spool	1.00
Filters, gelatine, 3in. sq.	4.12
-4in. sq.	5.50
-ND, 3in. sq.	6.88
-ND, 4in. sq.	10.65

FILMSTOCK

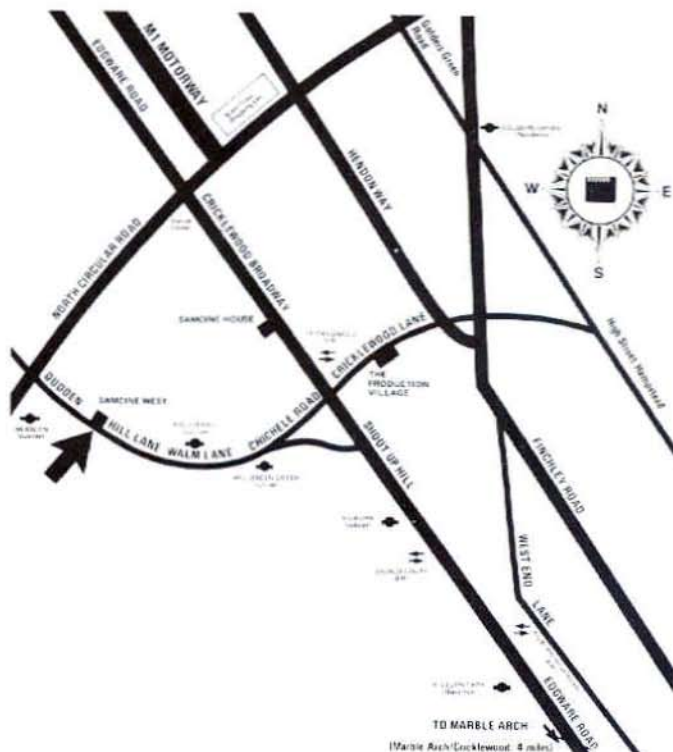
16 & 35 mm
EASTMAN KODAK
NEGATIVE
and
REVERSAL
in various lengths
and windings



SAMUELSON LIGHTING LIMITED

Samcine West,
Dudden Hill Lane,
London NW10 2DS

Tel: 01-452 5477/8/9, Telex 21430
Cables: Samcine London



Note: All lighting prices are quoted on a daily basis, the weekly rate is five times the daily and long term and contract rental are by quotation

The attention of Clients is drawn to the fact that members of Samuelson Group PLC supply equipment, materials and services only in accordance with their respective Conditions of Business. Copies of these Conditions of Business, which include clauses which exclude limit or modify the liability of the Samuelson Group company in question and provide for an indemnity from the Customer in certain circumstances are available on request.

ALTERNATORS, GENERATORS and LIGHTING TRANSPORT



MOBILE AC ALTERNATORS

Note: The following alternators are FREQUENCY CONTROLLED and may be operated at 48, 50 or 60 Hz for use with HMI lights. It should be noted however that no alternator will deliver as much power at 48 Hz as it will at 50 or 60 Hz and where applicable power ratings are shown for the three frequencies.

Similarly no alternator or generator will deliver as much power at high altitude as it will at sea level, or in conditions of extreme heat as it will in a temperate climate. These facts should be born in mind when ordering generating equipment where there is a specific load requirement.

		per day	per mile
OWL 1	15 kW 240 V 60 Hz, silenced, mounted in a VW van with space to carry lighting equipment	55.00	0.30
OWL 5	20/30/35 kW 240 V 48/50/60 Hz silenced, mounted in a Mercedes 608 van with space to carry some lighting equipment	75.00	0.40
OWL 2	35/50/55 kW 240 V 48/50/60 Hz silenced, mounted in a Mercedes 608 van, with space to carry some lighting equipment	110.00	0.40
OWL 6	40/50/60 kW 240 V 48/50/60 Hz silenced, mounted on a Bedford chassis (with some space to carry cables)	90.00	0.40
OWL 7	85/100/110 kW 240 V 48/50/60 Hz silenced, mounted on a Bedford chassis (alternator only)	150.00	0.40

PORTABLE UNITS

4 kW HONDA	28.00
10 kW, 120/240 V 60 Hz, wild	21.00
15 kW, 120/240 V 60 Hz, wild	35.00
— Trailer to accommodate 1 or 2 15 kW portable generator units	5.00
12 kW, 240 V 50/60 Hz, sync lock, silenced	27.00

MOBILE DC GENERATORS

250 amp	120 V d.c. blimped generator mounted on a Landrover vehicle, complete with Molevator to carry a 225 amp Brute arc lamp	55.00	0.40
	— as above but mounted on a de-mountable platform	55.00	0.40
500 amp	120 V d.c. silenced generator mounted on a Ford D series chassis	75.00	0.40
1000 amp	120 V d.c. silenced generator, as above	120.00	0.40

Note: Diesel and other fuels for generators are charged at cost.

LIGHTING TRANSPORT

10 ton VAN	45.00	0.40
5-7 ton LUTON VAN	40.00	0.30
35 cwt FORD TRANSIT or VW LUTON VANS	30.00	0.30
20 cwt FORD or VW TRANSIT VAN	25.00	0.30
8 cwt ESCORT VAN	20.00	0.25
SAM MOBILES 2 and 3 custom bodied 7 and 8 ton vans which may be racked out to suit any equipment requirements	40.00	0.30

Driver/Operator costs for all alternators, generators and vehicles available on request.

ARC, HMI, CID & CSI LIGHTS



Per Day
£

ARC LIGHTING

225 amp BRUTE,	M.R., (24 in. dia Fresnel lens) complete with head extension cable, grid, barn doors, diffuser/gel frame, etc. As above but with clear glass front	25.00
225 amp LIGHTWEIGHT BRUTE,	M.R. (24 3/4 in. dia Fresnel lens) complete as regular Brute	27.00
225 amp BABY BRUTE,	M.R. (14 in. dia Fresnel lens) complete as regular Brute	25.00
	— Carbons, white or LCT. See current consumables list.	
	— Clear glass front, additional	2.00
	— Dimmer Shutter	4.00
	— Scrims, set of 4	2.50
	— Stands, Molevator	12.50
	— Desert dolly for above	10.00
	— Wind-up	1.00
	— Skate, Samcine	1.00
	— Turtle	0.20
	— Standby mechanism	12.00
	— Grid	3.00
	— head extension cable	0.40
	— Transportation truck	1.50
	— Weatherproof cover	0.50
150 amp ARC,	M.R. (21 in. dia Fresnel lens), complete as regular Brute	11.00
	— As above but with clear glass front	13.00
	— Carbons, white or LCT, see current consumables list	
	— Dimmer shutter	4.00
	— Windup stand	1.00
	— Turtle	0.20
	— Duarc stand	2.00

LIGHTNING EFFECT

Scissor Arc	5.50
Samcine automatic lightning box	9.50

HMI, CID & CSI LIGHTING

FRESNEL HMI LIGHTS, complete with barn doors, filter frame, ballast unit and stand	
6 kW	78.00
4 kW	50.00
2.5 kW	33.00
1200 W	26.00
575 W	18.00
575 W Softlight	22.00
FLOOD HMI LIGHTS,	
575 W, complete as above	16.00
BATTERY PORTABLE HMI LIGHTS,	
200 W complete with charger	22.00
— Additional battery for above	10.00
200 W mains adaptor	3.00
200 W inverter	8.00
HMI extension cable, 100 ft.	1.25
48 V battery kit (non spillable)	20.00
Battery trolley for above	1.00
FOLLOW SPOT CSI LIGHTS,	
1 kW, complete with ballast unit and stand	18.00
SEALED BEAM CSI LIGHTS,	
1 kW, complete with ballast unit and stand	15.00
— Twin unit, (2 x 1 kW), complete	20.00



INCANDESCENT, QUARTZ and BATTERY LIGHTS

Per
Day
£

INCANDESCENT AND QUARTZ LIGHTING

FRESNEL LIGHTS , complete with barn doors, filter frame and stand	
10 kW (CP 54-bulb)	11.00
– Dimmer shutter	3.00
– Scrim, set of 4	2.50
– Snoot	0.50
5 kW (CP 29 bulb)	5.75
– Dimmer shutter	3.00
– Scrim, set of 4	1.50
– Snoot	0.50
2½/5 kW (CP 32 bulb)	9.00
2 kW (CP 41 bulb)	3.75
– Dimmer shutter	2.50
– Scrim, set of 4	1.50
– Snoot	0.50
1 kW PUP (CP 40 bulb)	3.00
– Scrim, set of 4	1.25
– Snoot	0.50
100-200 W INKIE DINK (A1/168 bulb)	2.00
500 W MIZAR	3.00
QUARTZ LIGHTS , complete as Fresnel lights	
2 kW BLONDE (FEY/FEX bulbs)	7.00
– Dichroic filter for above	2.50
BLONDE KIT, 2 x lamps, stands, cables, filters, etc.	18.00
800 W REDHEAD (FAD/DXX bulbs)	4.30
– Dichroic filter for above	1.25
TOTALIGHT and umbrella	4.00
MINNETTE 100 W 12 V	3.50
PULSAR (650 W DYR)	4.00
REDHEAD KIT, 2 x lamps, stands, cables, filters, etc.	14.50
LOWELL 1000 W type 'D' (FEP/FEL) bulbs)	6.00
LOWELL KIT, 2 x lamps, stands, cables, filters, etc.	14.50
MINIPRO KIT, (240 V DYR 650 W, 110 V SYS 600 W or 30 V DYG 250 W bulbs) 3 x lamps, stands, cables, filters, etc.	14.50
TOTAKIT (4)	20.00
MINIBRUTES , (multiples of 115 V FCX 650 W PAR36 bulbs	
NINELIGHT (115 V only)	18.50
EIGHTLIGHT (115 V or 240 V)	18.50
SIXLIGHT (115 V or 240 V)	14.50
FOURLIGHT 115 V or 240 V)	12.00
JUPITER (115 V only) single bulb, clip-on type	4.30
MAXIBRUTES (multiples of 115 V FFS 1000 W PAR 64 bulbs	
TWENTYFOUR LIGHT (115 or 240 V)	88.00
SIXTEEN LIGHT (115 or 240 V)	59.00
NINE LIGHT (115 V or 240 V)	33.00
SIX LIGHT (115 V or 240 V)	22.00
FOUR LIGHT (115 V or 240 V)	15.00
DOUBLE BROAD	7.00
SINGLE BROAD	4.30
CYCLITE (4)	13.00
DOMINO (4)	13.00
ROCKETTE	4.30
FOLLOW SPOT	
2 kW STRAND	9.00



SOFT and MISCELLANEOUS LIGHTING

Per
Day
£

BATTERY LIGHTING

H.M.I. , 200 W complete with charger	22.00
– additional battery for above	10.00
200 W mains Adaptor	3.00
200 W inverter	8.00
HMI extension cable, 100 ft.	1.25
48 V battery kit (non spillable)	20.00
Battery trolley for above	1.00
SUNGUN , 250 W 30 V 7 Ah battery, complete with di- chroic daylight filter	8.50
– 7 Ah battery, additional	4.50
– Charger, 1 way, additional	2.00
– Charger, 2 way, additional	3.50
REDHEAD , 250 W 30 V 7 Ah battery	9.50
– 600 W 48 V 4 x 60 Ah car batteries	20.00
– Battery trolley for above	1.00
– 12 V 60 Ah batteries, additional	5.00
EFFECTS TORCH , complete with 30 V 7 Ah battery belt	8.00
QUARTZ CAR HEADLIGHTS , see current consumables list	

SOFT LIGHTING

BASHERS , 275 or 500 W (No. 1 or No. 2 Photofloods)	1.20
LOWELL SOFTLIGHTS , (2 x 240 V EME 800 W, or 2 x 120 V FCM 1000 W bulbs) complete with stand	6.00
LOWELL SOFTLIGHT KIT , 2 x lamps, stands, cables, etc.	11.00
NAROSOFT ,	
5 kW (4 x 1250 W P2/12 bulbs)	9.00
10 kW (2 x 5 kW lamps stacked)	15.00
15 kW (3 x 5 kW lamps stacked)	22.00
NORTHLIGHT ,	
5 kW, 4 x 1250 W P2/12	8.00
2½ kW, 2 x 1250 W P2/12	6.00
1250 W (1250 W P2/12 bulb)	4.30
SKYPANS ,	
10 kW (CP 54 bulb)	10.00
5 kW (CP 29 bulb)	5.50
2 kW (CP 41 bulb)	3.00
– skirt for 2 kw/5 kW Skypans	0.80
SPACELIGHT , with black or white silks, (6 x EME 800 W, 240 V or 6 x 120 V FCM 1000 W bulbs)	12.00
WORKLIGHTS ,	
Single Can, 1000 W (CP 3 bulb)	1.20
Double Can, (2 x 1000 W CP3 bulbs)	2.00
Hanging Banks, 5 x 1 kW (5 x CP 3 bulbs)	5.50
TV Scoop, 500 or 1000 W (GES bulb)	2.00
ZAPLIGHT , (2 x EME or FCM bulbs)	6.00

MISCELLANEOUS LIGHTING

CLIP-ON , 275 or 500 W reflector photo-flood bulbs	1.20
COLORTRAN , ½ kit, 2½ kW total, 4 x lamps, stands, barn doors, converters, etc.	17.50
FOLLOW SPOT , 2 kW	9.00
PATT 23 EFFECT SPOT	6.00
– Colour wheels for above	1.25
SEARCHLITE 150 A	72.00
UNDERWATER LIGHTING 1 kW-10 kW	
Details on request	



POWER DISTRIBUTION EQUIPMENT

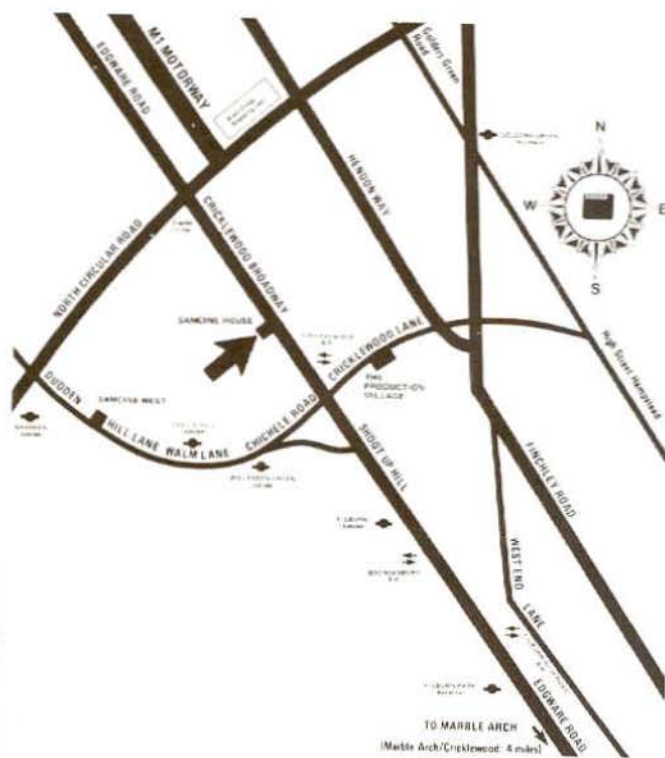
	Per Day £
DISTRIBUTION CABLE, per 100 ft. run	1.25
EXTENSION CABLES,	
16 or 32 amp BS4343 or Kleigl, 25 ft.	0.25
16, 32, 63 or 125 amp BS4343, or Kleigl, 50 ft.	0.40
– 100 ft.	0.80
JUMPER, 16 amp BS4343 to 13 amp 4 way outlet	1.20
– to and from 13 or 15 amp, 16 amp BS4343 or Kleigl	0.25
Y cord (1 in, 2 out), 16 or 32 amp BS4343	0.25
Splitter unit (1 in, 3 out), 16 amp BS4343	1.20
AC LIGHTING POWER DISTRIBUTION SYSTEM, Samcine, (incorporates earth leakage detection and warning and individual line breaker switches) 125 amp in, 3 x 32 amp and 5 x 16 amp BS4343 outlets	4.50
– 3 phase, 375 amp in, 3 x 125 amp BS4343 outlets	4.50
AC POWER DISTRIBUTION BOXES, 63 amp in, 3 x 32 and 5 x 16 amp BS4343 outlets	4.25
– 32 amp in, 5 x 16 amp BS4343 outlets	3.00
AC SWITCH/FUSE BOXES, single or 3 phase, 100 or 300 amp	2.00
– 60 amp	1.75
DC CONTACTOR UNIT, 320 amp x 320 amp	7.50
DC POWER DISTRIBUTION EQUIPMENT, Spider Boxes, 6-way	3.00
– HI Boxes, A type	1.00
– Flat type	1.00
– Rubber Box single cable connector	0.20
DIMMERS, Thyristor, a.c. only, 24 kW (6-way)	40.00
– 10 kW	6.60
– 6 kW	4.00
– 3 kW	3.30
– 1250 W	2.00
– 3 x 5 kW	10.00
– 6 x 2.5 kW	10.00
– 6-way desk	8.00
– 12-way desk	8.00
DIMMERS, wire wound, a.c. or d.c. 1 or 2 kW	2.00
– 5 kW	4.00
– 10 kW	6.60
– 2 x 10 kW	11.00
– 4 x 10 kW	22.00
SWITCH UNIT, with remote contactor, 200 amp, d.c.	2.50
SWITCH TRUCK, 6 x 200 amp, a.c. or d.c.	6.00
TRANSFORMER, 240-115 V a.c. 1000 W	2.00

SAMUELSON COMMUNICATIONS LIMITED

SAMUELSON COMMUNICATIONS LIMITED
 Conference and Presentation Division
 303-315 Cricklewood Broadway
 London NW2 6PQ
 Tel: 01-452 8090, Telex: 21430
 TeleFax: 01-450 3881, Cables: Samcine London

Note

All Video Production, Video Display and Presentation Equipment available from Samuelson Communications NW2 is also available from Samuelson Communications West One.



The attention of Clients is drawn to the fact that members of Samuelson Group PLC supply equipment, materials and services only in accordance with their respective Conditions of Business. Copies of these Conditions of Business, which include clauses which exclude limit or modify the liability of the Samuelson Group company in question and provide for an indemnity from the Customer in certain circumstances are available on request.

VIDEO PRODUCTION EQUIPMENT

	Per Day £	Per Week £
CAMERAS (U.K. Standard unless otherwise stated)		
BROADCAST SPECIFICATION		
SONY BVP 330P complete with Cannon 13:1 or Fujinon 17:1 or 14:1 lens (also available in NTSC version)	220.00	1100.00
SONY BVP 330P, as above but in EFP mode comprising 5 in. viewfinder, camera control unit, remote zoom and focus control, 20 metres cable and Ronford F3 head and legs.	272.00	1360.00
ACCESSORIES FOR BVP 330P		
ADDITIONAL LENSES		
Fujinon 7 mm to 49 mm wide angle lens	50.00	250.00
Fujinon 11/330 mm f/1.6 lens x 2 x range extender with remote controls		
Shot box for Fujinon 11/330	25.00	125.00
ADDITIONAL CABLES:		
25 mtrs	8.00	40.00
50 mtrs	16.00	80.00
100 mtrs	32.00	160.00
GENERAL ACCESSORIES		
NTSC boards for camera and CCU 300	48.00	240.00
5 in. Viewfinder	20.00	100.00
Camera control unit	40.00	200.00
Matte box assembly	6.00	30.00
Side mount for viewfinder	5.00	25.00
Operational control panel (300P)	15.00	75.00
Mains/Battery kit	30.00	150.00
Battery charger (BP 90)	10.00	50.00
EFP kit as a separate item	60.00	300.00
HIGH GRADE INDUSTRIAL		
HITACHI FP22, with broadcast quality 14:1 lens (A14 x 9 BERM37)	110.00	440.00
JVC KY2700 with Fujinon 14:1 lens	95.00	285.00
JVC KY2000 with 10:1 lens	72.00	216.00
HIGH GRADE INDUSTRIAL, EFP MODE complete 5 in. viewfinder, camera control unit, remote zoom and focus control and 15 m cable:		
HITACHI FP22	140.00	560.00
JVC KY2700	130.00	390.00
JVC KY2000	92.00	276.00
ACCESSORIES		
ADDITIONAL CABLES, 50 mtrs, FP 22		
- 50 mtrs, KY2000/2700	20.00	80.00
MATTE BOX for JVC 2000/2700	15.00	45.00
INCLINING PRISM for JVC	20.00	80.00
SINGLE TUBE CAMERAS		
SONY DXC1 1800 with 10:1 lens	40.00	120.00
HITACHI GP61	25.00	75.00
SONY AVC 3250CE monochrome	17.00	51.00

VIDEO PRODUCTION EQUIPMENT cont.

	Per Day £	Per Week £
VIDEO TAPE MACHINES		
'C' FORMAT		
AMPEX VPR 20, complete with time code generator, batteries and charger, mains adaptor and colour confidence playback	220.00	1100.00
SONY BVH 500 APS, complete with time code generator, batteries and charger, mains adaptor and chroma corrector	220.00	1100.00
SONY CLP 550P colour playback adaptor for BVH500 APS	30.00	150.00
SONY HI-BAND		
BVU 800P - 1 hour record/playback (mains only) with time code	125.00	625.00
BVU 200P - 1 hour record/playback (mains only)	100.00	500.00
BVU 110P - 20 minutes record/playback complete with time code generator	80.00	400.00
BVU 100P - NTSC version	30.00	400.00
BVU 50P - 20 minutes, recorder only, complete with batteries, charger and mains adaptor	48.00	240.00
BVU 50P - NTSC version	48.00	240.00
LOW BAND U-MATIC AND VHS		
MAINS - maximum 1 hour tapes		
SONY 5850 Edit, record/playback	75.00	225.00
SONY 5800 Edit, playback only	50.00	150.00
SONY 5630 record/playback	25.00	75.00
SONY 5030 playback only	20.00	60.00
JVC CR8200 Edit, record/playback	60.00	180.00
PORTABLE - maximum 20 minute tapes		
JVC 4400	40.00	120.00
SONY 4800	40.00	120.00
VHS		
JVC BR-6400TR Edit, record/playback	25.00	75.00
JVC BP-5300, playback only (heavy duty industrial quality)	20.00	60.00
PANASONIC - 8170, playback only (heavy duty industrial quality)	20.00	60.00
Other machines - PAL only record/playback	15.00	45.00
Portables	30.00	90.00
ACCESSORIES		
Mains/battery kit for SONY 'C' and Hi-band machines	30.00	150.00
Battery charger for SONY 'C' and Hi-band machines	10.00	50.00
SONY BVG 1000P time code generator/reader	40.00	200.00
SELTECH 3700 time code generator/reader	40.00	200.00
TIME BASE CORRECTION		
AMPEX TBC2 (requires SPG or reference input, For use with 'C' format or U-matic)	130.00	650.00
SONY BVT 2000P (can be used with 'C' format Hi-band or U-matic. Self contained but can be fed with reference source)	130.00	650.00

VIDEO PRODUCTION EQUIPMENT

cont.

Per Day
£ Per Week
£

EDIT SUITES and PRODUCTION MONITORS

EDIT SUITES

SONY SYSTEM, comprising 1 x 5850 and 1 x 5800 with RM 440 controller, complete with 2 x monochrome and 1 x colour monitor and sound mixer and leads	150.00	600.00
SONY SYSTEM, with edit machines and controller and leads	100.00	400.00
JVC SYSTEM, comprising 2 x CR 8200 with RM 88 controller, controller, complete with 2 x monochrome and 1 x colour monitor and sound mixer and leads	130.00	520.00
JVC VHS SYSTEM, comprising 2 x BR-6400 TR and 1 x RM 88U controller	65.00	195.00

PRODUCTION MONITORS

COLOUR-GRADED

BARCO 20 in. (model CTVM 3/51) Grade I	30.00	150.00
EV 20 in. (model 61518) Grade II	25.00	125.00
BARCO 14 in. (model CTVM 3/35) Grade I	30.00	150.00
BARCO 14 in. Grade II	25.00	125.00

OTHER COLOUR MONITORS — with sound

SONY 20 in.	18.00	54.00
EV 17 in.	24.00	72.00
JVC 14 in.	12.00	36.00
SONY 9 in. mains/portable	18.00	54.00
JVC 6 in. mains/portable	9.00	27.00
JVC 6 in. NTSC	9.00	27.00

MONOCHROME — mute

PHILIPS 11 in. (model 1911) Grade 1, luminant 'D'	12.00	48.00
SONY 9 in.	8.00	24.00
HITACHI 10 in.	9.00	27.00
HITACHI 9 in. with black-level clamping	10.00	30.00
SONY 4 x 4 in. in standard rack-mount	20.00	60.00

VIDEO PRODUCTION EQUIPMENT

cont.

Per Day
£ Per Week
£

GENERAL ACCESSORIES

TEST EQUIPMENT

SYNC PULSE GENERATOR, Acron 505P	30.00	120.00
— Link 250 with test signals	30.00	120.00
— Philips LKM 4210 with test signals	30.00	120.00
VECTORSCOPE, EV 4020A and EV 4040 Waveform monitor	30.00	120.00
— Hitachi, with battery back	16.00	64.00
WAVEFORM MONITOR, Hitachi, with battery pack	16.00	64.00

EFFECTS GENERATORS AND MIXERS

VEL 2-channel mini mixer	12.00	48.00
VISCOUNT 1107, 3-channel mixer and effects generator	12.00	48.00
JVC KM 1500, 4-channel mixer with KV1510 chromakey generator	40.00	160.00
PANASONIC WJ5500E, 8-channel special effects generator	50.00	200.00
SONY SEG 2000P, 6-channel special effects generator	60.00	240.00
JVC KM 2000, 8-channel special effects generator	75.00	300.00

COX EQUIPMENT

339 COLOUR CORRECTOR	30.00	120.00
COX BOX Mk 4 colouriser and effects	50.00	200.00
CAPTION INSERTER and down-stream keyer	50.00	200.00
PAL CODER with colour bars for conversion from RGB to composite	25.00	100.00
PAL DECODER with comb filter for conversion from composite to RGB	50.00	200.00
10 x 4 VIDEO and AUDIO MATRIX UNIT	40.00	160.00

VIDEO DISPLAY EQUIPMENT

	Per Day £	Per Week £
LARGE SCREEN PROJECTORS		
GENERAL ELECTRIC PJ5055 LIGHT VALVE	900.00	Nego- tiable
High-powered xenon projector (typical output 1200 lumens) for picture sizes to 24 ft. x 18 ft. Front or rear projection and interchangeable lenses for variable throw distances. - Inputs: PAL, SECAM, NTSCN4, RGB, composite video		
BARCO DATA	200.00	800.00
High resolution projector particularly suitable for colour graphics and computer data presentations - Inputs: Composite video, analogue or TTL RGB. Separate sync or sync on green with separate h and V drives and variable line frequency from 512 lines to 850 lines		
BARCO VISION	150.00	600.00
- Inputs: PAL, NTSC N3 + N4, SECAM, RGB with separate sync or sync on green, composite video		
SONY 72 in.	85.00	255.00
- Inputs: PAL, NTSC N4, SECAM, composite video, incorporating sound system		
RANK TOSHIBA 45 in.	75.00	225.00
- Inputs: PAL, NTSC N3 + N4, SECAM, composite video, incorporating RF tuner and sound system which also has microphone input		

VIDEO DISPLAY EQUIPMENT cont.

MONITORS

RECEIVER/MONITORS (colour)

	Per Day £	Per Week £
SONY 27 in. PAL only, composite video, incorporating separate audio and loop-through	22.00	66.00
BARCO 22 in. SUPER QUAD colour receiver monitor	22.00	66.00
BARCO 15 in. SUPER QUAD colour receiver monitor	20.00	60.00
SONY 20 in. (model CVM 2000PSB) - Inputs: PAL, NTSC N4, SECAM composite video	18.00	54.00
SONY 18 in. (model 1850) - Inputs: PAL, NTSC N4, SECAM, composite video	14.00	42.00
PHILIPS 26 in. RF only with Teletext	22.00	66.00
PANASONIC 8 in. (model TC 800G) PAL only Composite video, mains/battery powered	10.00	30.00

MONITORS (colour)

BARCO 26" (model CS66) - Inputs: PAL, NTSC N4, SECAM, composite video as standard, RGB on request. Switchable 220/110 V	22.00	66.00
BARCO 26 in. (model CM51) Analogue RGB, mute	25.00	75.00
SONY 20 in. (model PVM 2000PS) - Inputs: PAL, NTSC N4, SECAM, separate or internal sync and underscan facility	18.00	54.00
EV 17 in. (model 6000) PAL only, composite video and RGB	24.00	72.00
JVC 14 in. - Inputs: PAL, NTSC N4, SECAM Composite video	12.00	36.00
SONY 9 in. (model PVM 9000ME) - Inputs: PAL, SECAM, Composite video Mains/battery powered	18.00	54.00
JVC 6 in. (model TM 41) - Inputs: PAL, SECAM, Composite video Mains/battery powered	9.00	27.00
JVC 6 in. as above but NTSC only	9.00	27.00

MONITORS (monochrome-mute)

SONY 9 in. (model PVM 90CE)	8.00	24.00
HITACHI 10 in. (model VM 900)	8.00	24.00
HITACHI 9 in. (model VM 906), with black-level clampin	10.00	30.00
SONY 4 x 4 in. (model PVM 411CE) for standard rack-mount	20.00	60.00

VIDEO DISPLAY EQUIPMENT cont.

VIDEO TAPE MACHINES

HI-BAND - PAL ONLY

	Per Day £	Per Week £
BVU 800P 1 hour	125.00	625.00
BVU 200P 1 hour	100.00	500.00
BVU 110P 20 minutes	80.00	400.00

U-MATIC LOW-BAND

SONY 5850 EDIT, PAL SECAM	75.00	225.00
SONY 5800 EDIT, PAL SECAM	50.00	150.00
SONY 5630 RECORD/PLAYBACK PAL, NTSC N4, SECAM	25.00	75.00
SONY 5030 PLAYBACK ONLY PAL, NTSC N4, SECAM	20.00	60.00
JVC CR8200 EDIT, PAL only	60.00	180.00

VHS

JVC (BP 5300) PLAYBACK PAL, NTSC N4, SECAM	20.00	60.00
PANASONIC (Model 8170) PLAYBACK PAL, NTSC N4	20.00	60.00
JVC (Model BR-6400TR) EDIT PAL, NTSC N4, SECAM	25.00	75.00
VHS Format PAL PLAYBACK others	15.00	45.00

BETAMAX

SONY (MODEL T9ME) RECORD/PLAYBACK	20.00	60.00
Other BETAMAX PAL only	15.00	45.00

VIDEO DISC PLAYERS

PHILIPS (MODEL VP705) industrial interactive player, PAL only	30.00	90.00
--	-------	-------

ACCESSORIES

AUDIO DISTRIBUTION AMPLIFIERS, 4 or 6 way - 8 way	3.00 5.00	9.00 15.00
COX CODER, for conversion of RGB signals to composite video (PAL only)	35.00	105.00
COX DECODER, for conversion of composite video signals to RGB (PAL only)	55.00	165.00
LASER POINTER	12.00	36.00
MONITOR HANGING BRACKETS	5.00	15.00
NTSC sub-carrier converter for converting 3.58 to 4.43 or vice versa	30.00	90.00
RF DISTRIBUTION AMPLIFIERS, 6 or 8 way	5.00	15.00
RF MODULATOR	5.00	15.00
RF TUNER	10.00	30.00
VIDEO + AUDIO SWITCHING MATRIX - 8-in 3-out	20.00	60.00
VIDEO DISTRIBUTION AMPLIFIERS, 5 way - 10 way	5.00 7.00	15.00 21.00
VIDEO EQUALISING AMPLIFIERS for boosting signal on long cable runs	7.00	21.00
VIDEO FADE UNIT for fading between two non- sync'd video sources without roll or jump	20.00	60.00

COMPUTER/VIEWDATA EQUIPMENT for COMPUTER GENERATED GRAPHICS

	Per Day £	Per Week £
BARCODATA high resolution colour projector Composite video, analogue RGB, TTL RGB. Separate sync or sync on green with separate H and V drives. Line frequency variable from approx 512 to 850 (1000 line version available on request)	200.00	800.00
Interface available fro various Micro, Mini and Mainframe computers, including IBM PC.	POA	
BARCO 26 in. TTL data display monitor	25.00	75.00
BARCO 14 in. TTL data display monitor	20.00	60.00
VIEWDATA/PRESTEL TERMINALS		
BARCO 14 in. (model CV33) with full keyboard	30.00	90.00
PHILIPS 14 in. Prestel set	15.00	45.00
BARCO 20 in. (model CRS 2032) with full keyboard	20.00	60.00
TANTEL - VIEWDATA ADAPTOR may be used to convert any of our monitors into a Viewdata	10.00	30.00
MICRO-COMPUTER-BASED SYSTEM for down loading Viewdata/Prestel frames from off-line direct to video tape in colour. The system can also be locked to a studio video mixer for use in live transmissions. System comprises: micro- computer, modem, SPG, coder and monitor	POA	
BBC MICRO COMPUTER with disc drive, may be used to drive interactive disc.	POA	
DIGITAL FRAME STORE for colour graphics systems	POA	
BBC MICRO CAPTION GENERATOR for titling and speaker support	POA	
COLOUR GRAPHIC COMPUTER	POA	
This system provides full colour graphics on text for use as speaker support and complete presentations. Pictures are created on a computer in colour, with special effects if required, in the studio. For presentation the show is loaded into a digital frame store which may be connected to either a video projector or monitor, thus reducing the amount of equipment needed on site.		
For more information contact GARY DAVIS		

PRESENTATION EQUIPMENT cont.

	Per Day £	Per Week £
SOUND EQUIPMENT		
MICROPHONES		
AKG D12E	5.00	15.00
- C451, condenser, with VR1 extension	7.00	21.00
- VR2 4 ft. extension	4.00	12.00
AMCRON PZM 30 GP pressure zone	8.00	24.00
- PZM 6 LP	7.00	21.00
BEYER MCE 5.11, Lavalier	4.00	12.00
ELECTROVOICE, PL 77B	5.00	15.00
- PL 95A	5.00	15.00
SENNHEISER, MD 441	6.00	18.00
- MD 421	5.00	15.00
- MKH 415	10.00	30.00
- MKH 416	12.00	36.00
- MKH 815	12.00	36.00
- MKH 816	14.00	42.00
SHURE SM 58, dynamic	4.00	12.00
- SM 57	4.00	12.00
- 588	4.00	12.00
SONY ECM 50	4.00	12.00
RADIO MICROPHONES		
AUDIO hand held	12.00	36.00
- with tie-pin	12.00	36.00
MICRON 102 with Sony ECM 50	18.00	54.00
TALKBACKS		
CLEAR-COM, Master unit	-	24.00
- Out-stations (minimum 6 out-stations) each	-	12.00
COMMUNIQUE radio telephones per pair	22.00	66.00
EASY TALK radio head-set and microphone each	3.00	9.00
AMPLIFIERS		
YAMAHA power racks 2 x 570 W	44.00	132.00
- with active cross-over		
YAMAHA 2 x 285 W with or without power meters	22.00	66.00
BOSE 1800, 2 x 250 W	22.00	66.00
AMCRON DC300A, 2 x 150 W	22.00	66.00
QUAD 405, 2 x 100 W	10.00	30.00
YAMAHA P 2050, 2 x 50 W	8.00	24.00
TOA 100 W mixer amplifier	15.00	45.00
SPEAKERS		
2 x 500 W, TURBOSOUND	45.00	135.00
2 x 200 W, JBL 4690	36.00	108.00
2 x 250 W, H/H stacks	30.00	90.00
2 x 200 W, BOSE 802	18.00	54.00
2 x 75 W, BOSE 402	10.00	30.00
2 x 100 W, ELECTROSONIC	16.00	48.00
2 x 100 W, H/H PRO 100	12.00	36.00
2 x 80 W, ELECTROTECH	16.00	48.00
2 x 50 W, PORTAWEDGES	5.00	15.00
2 x 50 W, TOA COLUMN	8.00	24.00
2 x 10 W, FOSTEX monitors	5.00	15.00
20 W TOA outdoor horns	each 3.00	9.00

PRESENTATION EQUIPMENT cont.

	Per Day £	Per Week £
SELF-POWERED SPEAKERS		
2 x 100 W, YAMAHA A4	pair 30.00	90.00
75 W MFB PHILIPS	each 13.00	39.00
35 W MFB PHILIPS	each 8.00	24.00
2 x 20 W, YAMAHA MS10	pair 7.00	21.00
35 W, ROVING ROSTRUM, c/w microphone, complete with microphone	3.00	24.00
MIXERS		
SOUNDCRAFT 800B	24 into 8	120.00 360.00
ALICE 16/48,	16 into 4	40.00 120.00
ALLEN & HEATH 16/4/2	16 into 4	30.00 90.00
AUDIO DEVELOPMENTS ADO 31	10 into 2	30.00 90.00
ALICE 8/2/8	8 into 2	20.00 60.00
TOA RX-5	8 into 2	15.00 45.00
TEAC 2A	6 into 4	8.00 24.00
SECK 6Z	6 into 2	8.00 24.00
TAPE DECKS		
TEAC 80-8, 8 track with DBX		50.00 150.00
TEAC 3440, hi-speed 4 track		20.00 60.00
REVOX B77, hi-speed 2 track		16.00 48.00
TASCAM 133 A/V cassette		15.00 45.00
TASCAM T34 high speed 4-track		15.00 45.00
WOLLENSACK 2-way high speed cassette copier		25.00 75.00
HITACHI 15 W radio/cassette		8.00 24.00
Stereo cassettes	from	8.00 24.00
PORTABLE RECORDERS		
NAGRA 4.2 Kit		30.00 90.00
NAGRA E Kit		14.00 42.00
NAGRA III Kit		15.00 45.00
UHER 4200 Report		8.00 24.00
UHER CR240 stereo cassette		8.00 24.00
Mono cassette deck		3.00 9.00
MISCELLANEOUS		
D.I. Box		4.00 12.00
DIGITAL RECORDING ADAPTOR, Sony PCM		20.00 60.00
FREQUENCY SHIFTER		10.00 30.00
GRAPHIC EQUALISER, mono, DN27A		17.00 51.00
- stereo, Klark Teknik DN 30/30		25.00 75.00
HANGING BRACKETS, Bose, single speaker		5.00 15.00
- 4 speakers		20.00 60.00
MIKE STANDS, various		4.00 12.00
MULTICORES, 12 or 18 way in, 50 metre lengths		30.00 90.00
NOISE REDUCTION, Teac DBX		10.00 30.00
POWER UNIT, AKG Phantom		5.00 15.00
SPECTRUM ANALYSER, Klark Teknik DN-60		40.00 120.00
VOLTAGE STABILISER, 30 amp 240 V		50.00 150.00

SAMUELSON COMMUNICATIONS LIMITED WEST ONE

SAMUELSON COMMUNICATIONS LTD WEST ONE

8-12 Broadwick Street, London W1V 1FH

Tel: AV and Cine: 01-734 8981

Tel: Video and AV hire: 01-437 6686

Note

All Video Production, Video Display and Presentation Equipment available from Samuelson Communications NW2 is also available from Samuelson Communications West One.



The attention of Clients is drawn to the fact that members of Samuelson Group PLC supply equipment, materials and services only in accordance with their respective Conditions of Business. Copies of these Conditions of Business, which include clauses which exclude limit or modify the liability of the Samuelson Group company in question and provide for an indemnity from the Customer in certain circumstances are available on request.

SAMUELSON
COMMUNICATIONS
LIMITED
WEST ONE
only

CINE CAMERAS

Per Day £	Per Week £
-----------------	------------------

35 MM CAMERAS AND ACCESSORIES

ARRIFLEX IIC CAMERA, complete with 25-75 mm Cooke lenses	30.00	90.00
Barnies, all weather	2.50	7.50
— soft	3.00	12.00
Batteries, 16 V 4 Ah belt or 7 Ah	4.00	12.00
— Charger	2.50	7.50
Heated eye cup (stops misting up)	2.50	7.50
Inclining Prism, Samcine	22.00	66.00
Lenses, wide angle		
— 9.8 mm T2.8 KINOPTIC TEGEA	7.50	22.50
— 18 mm T2.2 COOKE SERIES III	5.00	15.00
wide aperture		
— 18 mm T1.4 ZEISS SUPER SPEED	22.00	66.00
— 25, 35, 50 and 85 mm T1.4 ZEISS SUPER SPEED, set of 4	50.00	150.00
— 135 mm T2 ZEISS SUPER SPEED	15.00	45.00
macro		
— 40 mm f/2.8 MAKRO-KILAR	4.00	12.00
— 90 mm f/2.8 MAKRO-KILAR	4.00	12.00
Extension tubes for above	2.50	7.50
long focal length		
— 300/600 mm T2.8/5.6 CANON	35.00	105.00
— 300 mm f/4 KILFITT	8.50	25.50
— 400 mm T4.5 CANON	45.00	135.00
— 600 mm f/5.6 KILFITT	17.50	52.50
— 400 mm f/4; 600 mm f/5.6; 800 mm f/8 or 1200 mm f/11 KILFITT COMBI	45.00	135.00
zoom		
— 25-250 mm T3.9 ANGENIEUX	28.00	84.00
Magazines, 200 ft.		
— 400 ft., additional	4.00	12.00
	set of 2	4.00
	set of 2	12.00
Matte Box, Samcine 6.6 in. sq.	7.50	22.50
Motors, Crystal control, 24/25 fps., 16 V	18.00	54.00
— Constant speed, 24 or 25 fps., 16 V	3.00	9.00
— Variable speed, 10-32 fps., 16 V	3.00	9.00
Support systems, Samcine bracket	2.50	7.50
— Arriflex shoulder pod	1.50	4.50
— Fleximount	4.50	13.50
Viewfinder, orientatable, Samcine	6.00	18.00
— periscope, Arriflex type	5.00	15.00
CINE 60 standard mount adaptors	6.00	18.00

CINE CAMERAS cont.

16 MM CAMERAS AND ACCESSORIES

	Per Day £	Per Week £
AATON 7 CAMERA		
complete with zoom lens, etc.	62.50	187.50
Barney, soft sound for magazine	2.50	7.50
Batteries, 1.2 Ah, 4 Ah belt or 7 Ah	5.00	15.00
— Charger	2.50	7.50
Heated eyecup (stops misting up)	2.50	7.50
Magazine, additional 400 ft.	7.50	22.50
Universal Matte Box 3 in.	5.00	15.00
ARRIFLEX 16 SR 'E' TYPE	50.00	150.00
complete with zoom and accessories		
ARRIFLEX 16 SR CAMERA		
complete with zoom lens etc.	62.50	187.50
Batteries, 1.2 Ah, 4 Ah belt or 7Ah	5.00	15.00
— Charger	2.50	7.50
Inclining Prism, Samcine	22.00	66.00
Magazine, additional 400 ft.	7.50	22.50
Universal Matte Box 3 in.	5.00	15.00
Viewfinder, orientatable, Samcine	5.00	15.00
— Periscope, Arriflex type	5.00	15.00
ARRIFLEX 16 SR HIGH SPEED CAMERA	120.00	360.00
complete with zoom lens, etc.		
10-150 fps and 24/25 fps crystal control speeds, complete with variable speed unit		
Digital speed and footage display	12.00	36.00
ARRIFLEX 16 BL CAMERA		
complete with crystal control	37.50	112.50
Barnies, various types	3.00	9.00
Batteries, 4 Ah belt or 7 Ah	5.00	15.00
— Charger	2.50	7.50
Diopeters, set of two for 12-120 mm lens	1.00	3.00
Heated eyecup, (stops misting up)	2.50	7.50
Magazines, 2 x additional 400 ft.	3.00	9.00
— 2 x 1200 ft.	6.00	18.00
Universal Matte Box 3 in.	5.00	15.00
ARRIFLEX 16 St CAMERA		
complete with standard lenses 12.5-37.5	16.00	48.00
As above but with 12-120 T12.5 Angenieux	22.00	66.00
Battery, 4 Ah belt or 7 Ah battery belt	3.00	9.00
— Charger	2.50	7.50
Heated eyecup (stops misting up)	2.50	7.50
Inclining Prism, Samcine	21.00	63.00
Magazines, 2 x additional 400 ft.	5.00	15.00
Matte Box, 3 in. Universal	5.00	15.00
Motor, constant speed 24/25 fps., 8 V	2.50	7.50
Support, Samcine shoulder type	2.50	7.50
Viewfinder, orientatable, Samcine	6.00	18.00
— Periscope, Arriflex type	5.00	15.00

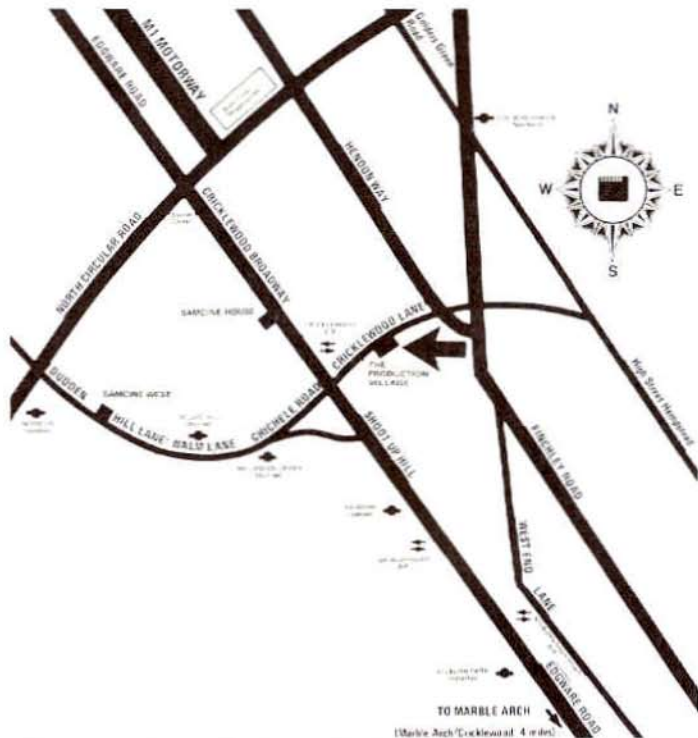
CINE CAMERAS cont.
and CINE CAMERA ACCESSORIES

	Per Day £	Per Week £
BOLEX EBM CAMERA		
complete with standard lenses	16.00	48.00
— with zoom 10-100 T2.5	22.00	66.00
BOLEX H16 CAMERA		
complete with standard lenses	12.00	36.00
— with zoom 12-120 T2.5 Angenieux	18.50	55.50
CANON SCOOPIC CAMERA, complete	12.50	37.50
Batteries, 2 x 180 or 250 mAh and charger	2.50	7.50
ECLAIR 16 NPR CAMERA,		
complete with 12-120 T2.5 Angenieux	39.00	117.00
PHOTOSONICS IPD 500 fps CAMERA		
complete	120.00	360.00
PHOTOSONICS IPD 500 fps CAMERA		
complete	120.00	360.00
— Magazine, additional 400 ft. for above	17.50	52.50
CINE CAMERA ACCESSORIES		
FLUID HEADS		
RONFORD-BAKER F15, (Arri 35 type)	15.00	45.00
RONFORD-BAKER F7	13.00	39.00
RONFORD-BAKER F4	12.00	36.00
RONFORD-BAKER F3 including tall tripod and spreader	10.00	30.00
SACHTLER & WOLF, (Arri 35 type)	7.50	22.50
FRICTION HEADS, ARRIFLEX,		
(Arri 35 type)	6.00	18.00
GEARED HEADS, SAMCINE-MOY MK III,		
13 in.	20.00	60.00
— MOY 16 in.	15.00	45.00
TRIPODS, tubular metal 2.50, 7.50		
wooden	2.00	6.00
DOLLIES, ELEMACK 'OCTOPUS' MKII		
— Platform	35.00	105.00
	2.00	6.00
AB hi-hat/AB-M adaptor	2.00	6.00
Hi-hat/leveller or Hi-hat	2.00	6.00
Limpet mount, Samcine Super type	7.00	21.00
— Samcine three suction pad type	5.00	15.00
Spreaders, Rolling Spider	3.00	9.00
— Lightweight metal	1.00	3.00
— Wooden or canvas	0.50	1.50



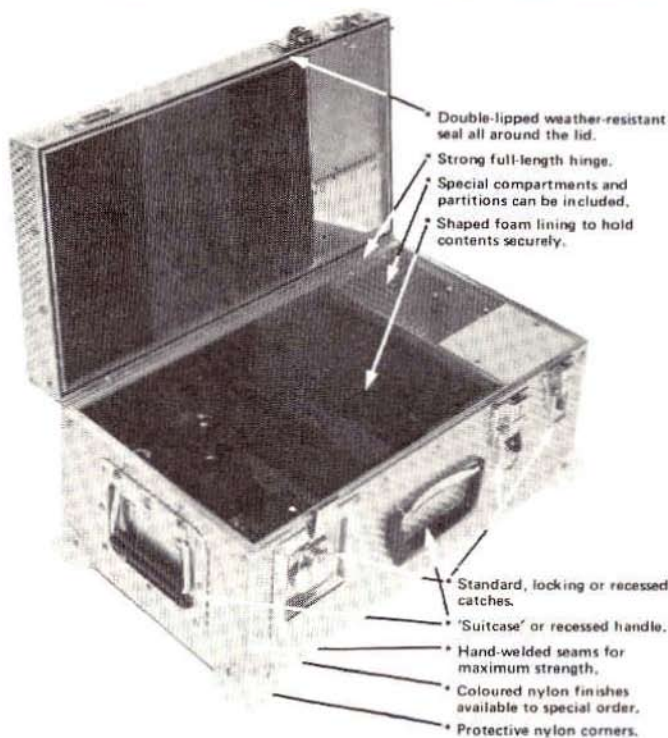
SAMCINE CASES LIMITED
100 Cricklewood Lane
London NW2 2DS

Tel: 01-450 2141 or 01-450 8969, Telex: 21430
TeleFax: 01-450 3881, Cables: Samcine London



The attention of Clients is drawn to the fact that members of Samuelson Group PLC supply equipment, materials and services only in accordance with their respective Conditions of Business. Copies of these Conditions of Business, which include clauses which **exclude limit or modify the liability of the Samuelson Group company in question and provide for an indemnity from the Customer in certain circumstances** are available on request.

SAMCINE RIGIDISED CASES



Tailor-Made to your Specification

The only sensible answer to the problem of how to protect and transport delicate and expensive equipment of all kinds, Samcine Cases are used by film and television companies, the electronics industry, rock bands etc. who know the false economy that cheap cases can prove to be.

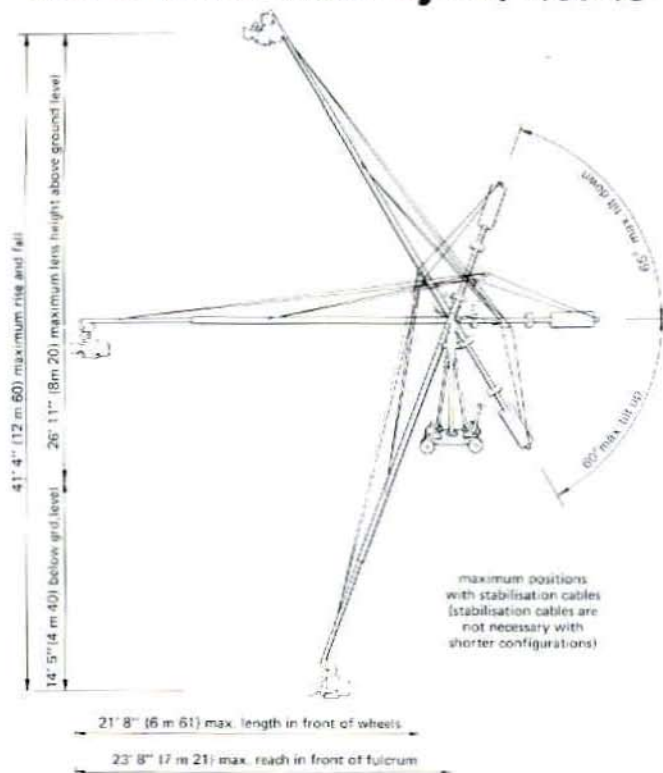
Expensive apparatus deserves the best.

Samcine Cases are designed and built entirely* in our own factory to the very highest standards from rigidised aluminium, a material with an unsurpassed strength-to-weight ratio combined with a considerable resistance to unsightly external marking so often seen on conventional metal cases.

Samcine Rigidised Aluminium Cases are available tailor made in virtually any size or shape with a choice of fittings and finishes, and in eight stock sizes ranging from 14 x 10" to 24 x 15".

*With the exception of certain fittings.

louma crane by SAMCINE



The 'Louma Crane by Samcine' is a remote control modular camera crane which is totally portable and which can make camera movements, hitherto possible only with the aid of a large truck-mounted camera crane. It has a rise and fall of over 43 ft. and a reach of 22 ft., positive pan and tilt remote controls operated by hand wheels in exactly the same manner as if the cameraman was up with the camera.

In 1981, the Louma Crane by Samcine won a Scientific and Engineering Award from the Academy of Motion Picture Arts and Sciences in Hollywood.

In making the award, Fay Kanin, the President of the Academy said:

"Every now and then, while watching a movie, I will ask myself how in the world that shot was made. I was intrigued with the possibilities of the hand-held camera — and that certainly has made its impact. But then along came something altogether new — and the results are nothing short of extraordinary. Our industry is constantly changing — and the LOUMA crane is going to change the way pictures will be made. It is an incredible device that makes impossible photography reasonably simple.



louma crane by SAMCINE



DISTRIBUTED WORLDWIDE BY:

AVAILABLE IN THE USA FROM:



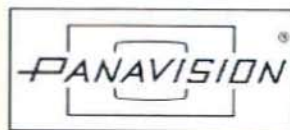
325/315 Clackwood Broadway
London NW2 6PD, England
Tel: 01-452 8000, Telex: 214432
Telefax: 01-492 3987
Cables: SAMCINE LONDON



24/26 Rue Jean Mûlin
94 Vincennes, Paris, France
Tel: 320 58 32, Telex: 63206CF
Telefax: 010 331 328 5073
Cables: SAMCINE PARIS



1 Gillivick Avenue
North Ryde 2113, N. Sydney
NSW Australia
Tel: 888 2366, Telex: 25108
Telefax: 010 612 888 9601
25 Lochlan Street, N. Melbourne
Victoria 3051, Australia
Tel: 328 5155, Telex: 31061



PANAVISION INCORPORATED
1818 Concord Street, Torrance 91336
Tel: (310) 882 1102

**GENERAL
CAMERA**

GENERAL CAMERA CORPORATION
540 W 38th Street, New York 10018
Tel: (212) 504 8700, Telex: 542706



LOUMA CRANE BY SAMCINE SPECIFICATION

The Louma Crane is a modular camera or boom arm which may be as long as 7.21m., 23ft. 8in. and which incorporates a remotely controlled pan and tilt camera mounting system.

Maximum length of crane arm from centre of dolly, with reinforcement stays: 7.21m., 23ft. 8in. (6.61m., 21ft. 8in. in front of front dolly wheel).

Length of weight tubes with maximum extension: 3m., 9ft. 10in.

Maximum length of crane arm from centre of dolly, without reinforcement stays: 4.80m., 15ft. 9in.

Minimum length of crane arm from central point: 0.91m., 3ft.

Minimum overall length: 2.15m., 7ft. 1in.

Maximum height of optical axis in 7.21m., 23ft. 8in. configuration, with stays and limited pan (height of fulcrum point = 2.60m., 8ft. 4in.); 8.20m., 26ft. 11in.*

Maximum height of optical axis in 7.21m., 23ft. 8in. configuration with 360° pan capability (height of fulcrum 2.60m., 8ft. 4in.); 7.10m., 23ft. 3in.*

Maximum rise and fall from a fulcrum point at least 7m., 23ft. above ground level: 12.06m., 44ft. 7in.

Thickness of platform supporting camera: 51mm., 2in.

Minimum height of optical axis of Panaflex camera in horizontal position above underside of platform:

184mm., 7 1/4in.

Minimum height of optical axis of Panaflex camera using a Samcine Inclining Prism: 45mm., 1 3/4in.

Maximum angle of tilt (boom) upwards with 360° panning capability: 45°.*

Maximum angle of tilt (boom) upwards with limited panning capability: 60° (pan limited in forward direction).*

Maximum angle of tilt (boom) downwards (there is no panning limitation in the downward tilt): 65°.

Minimum dimension of an aperture through which the head will pass while supporting a Panaflex camera: 40cm., 1ft. 7 3/4in. wide x 75cm., 2ft. 5in. high.

Maximum width of reinforcement stays for 7.21m., 23ft. 8in. configuration: 1.13m., 3ft. 8 1/2in.

Maximum height of reinforcement stays above tube axis: 91cm., 3ft.

Weight of individual counterweights: 15kg., 33 lbs.

Maximum all-up weight in 7.21m., 23ft. 8in. configuration with reinforcement stays and all weights, including dolly: 770kg., 1694 lbs.

Maximum weight of any single indivisible part excluding the dolly, (main centre tube assembly): 116 lbs.

Maximum length of control cable between fulcrum point and command console: 20m., 67ft. (40m., 34ft. with cable plus spare cable connected together).

The Louma Crane Command Console consists of an electronically operated remote camera pan and tilt system operated by two handles exactly as if it were a regular geared camera head like a Panaflex camera head.

The Command Centre incorporates a television monitor connected to the TV viewfinder system of the camera. A second close circuit TV camera is used to relay lens calibration information to the Focus Assistant who is able to remotely control the focus, aperture and zoom (if fitted) functions of the lens.

A complete Louma Crane system comprises:

Main Centre tube assembly

3 x large diameter extension tubes

4 x small diameter extension tubes

5 x weight tubes and safety screw

1 x intermediate tube

1 x camera head assembly

22 x weights

1 x Louma Crane Command Console

4 x Reinforcement legs and 4 x attachments castings for an Elemack dolly

Main centre tube levelling head complete with "Mangoire" electronic distribution box

2 x 20 m, 67 ft. cables

1 x 'U' shape mast and turtle to support camera head assembly while setting up

1 x Reinforcement system complete with 'V' shape reinforcement structure and 4 x cables and rear attachment casting

1 x Swan neck tube*

1 x Portable twin monitor for focus assistant

1 x Elemack Hornet dolly

2 x Masts for Hornet dolly

4 x legs for Hornet dolly

* A swan neck tube is being developed to make possible 360° panning at the maximum height.

The complete Louma Crane, excluding the individual weights and dolly, is supplied packed in 12 Samcine Rigidised cases.

Film cameras fitted with the necessary remote control systems are available from Panavision Inc. of Los Angeles and its representatives throughout the world.

Lightweight TV cameras may also be interfaced with the Louma Crane control systems.

The Louma Crane by Samcine was designed by Jean-Marie Lavalou, Alain Masseron and David Samuelson and manufactured jointly by Samuelson Alga Cinema in Paris and Samuelson Film Service Limited of London. They are available from Samuelson Alga Cinema S.A. in Paris, Samuelson Film Service Ltd. in London and in the United States.

"The Louma" and "Samcine" are registered trademarks throughout the world and the LOUMA crane by Samcine is covered by Patents in most parts of the world.



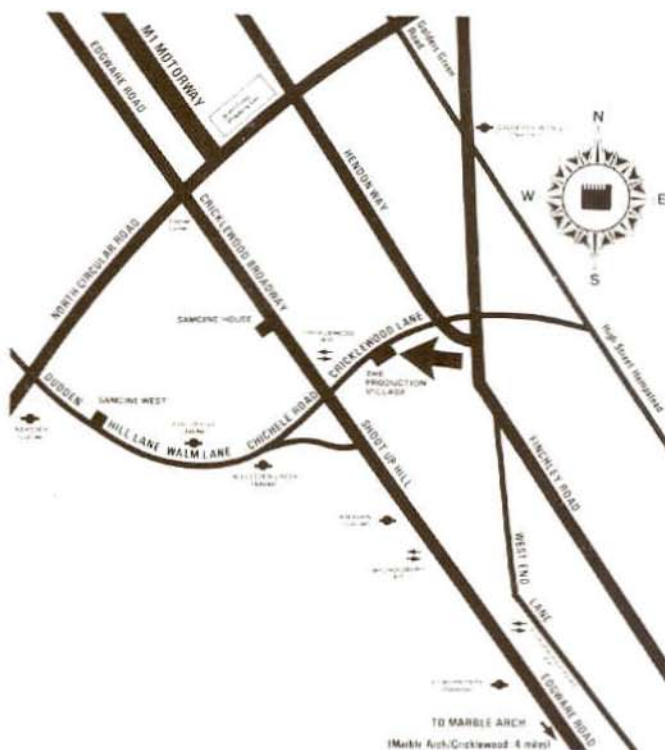
THE PRODUCTION VILLAGE LIMITED

One Hundred Cricklewood Lane

London NW2 2DS

Tel: 01-450 8969, Telex: 8954958

Cables: Samcine London



The attention of Clients is drawn to the fact that members of Samuelson Group PLC supply equipment, materials and services only in accordance with their respective Conditions of Business. Copies of these Conditions of Business, which include clauses which exclude limit or modify the liability of the Samuelson Group company in question and provide for an indemnity from the Customer in certain circumstances are available on request.



SANCINE SALES LTD.

The Specialist Film and TV Equipment Sales Company

CINEMA PRODUCTS GSMO 16 MM CAMERA

The compact, lightweight and low noise level 16 mm camera

CINEMA PRODUCTS CP16R 16 MM CAMERAS

The documentary, newsreel and television, single or double system 16 mm film camera used by TV companies all over the world.

CINEMA PRODUCTS CAMERAPROMPTER

A lightweight prompting device to use with any film or TV camera, especially on location.

CINEMA PRODUCTS ULTRA-T LENSES

High-speed 16 mm prime lenses, designed to give excellent definition and contrast in available light — particularly valuable for news and documentary filming.

PERFECTONE

Comprehensive range of film, sound, transfer and dubbing machines, along with projection and video scanning equipment.

RONFORD BAKER FLUID HEADS AND TRIPODS

The F15, F15S and F30 are ideal for 35 mm cameras, the F3, F4 and F7 for 16 mm and ENG/EFP TV cameras.

STEENBECK EDITING TABLES

The six-plate Steenbeck ST 1901 editing table has become the standard 16 mm table used throughout the film and television industries. Its clear, brilliant picture (resulting from the use of an 18-face polygon), straight lacing on the sound tracks, electronic counter and superb workmanship give it the edge over its competitors.

The ST 1401 4-plate and ST 701 6-plate are the most popular models made for 35 mm work.

TIFFEN FILTERS

The famous range of Tiffen filters, from colour correction filters to split-field lenses, from fog-makers to star-makers, as well as haze penetration and polar screen dazzle eliminators.

SPECTRA METERS

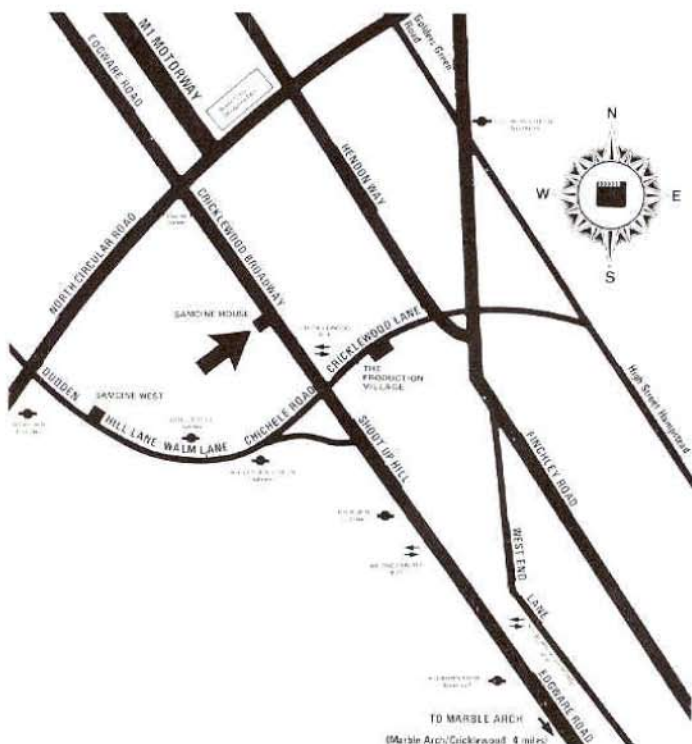
The exposure and colour temperature meters which professional cinematographers use.

In addition to the above, for which they are exclusive dealers, direct importers or main suppliers, Sancine Sales can supply any equipment from other manufacturers to special order. They also have a wide range of used equipment available at competitive prices.

SANCINE SALES LIMITED
Sancine House
303-315 Cricklewood Broadway
London NW2 6PQ

Tel: 01-450 4557, Telex: 21430

TeleFax: 01-450 3881, Cables: Sancine London.



The attention of Clients is drawn to the fact that members of Samuelson Group PLC supply equipment, materials and services only in accordance with their respective Conditions of Business. Copies of these Conditions of Business, which include clauses which exclude limit or modify the liability of the Samuelson Group company in question and provide for an indemnity from the Customer in certain circumstances are available on request.